



Operating Manual

# 3S Full Face Mask – Positive Pressure



Order No.: 10090494/03



*The Safety Company*

MSA Europe GmbH  
Schlüsselstrasse 12  
8645 Rapperswil-Jona  
Switzerland  
[info.ch@MSAsafety.com](mailto:info.ch@MSAsafety.com)  
[www.MSAsafety.com](http://www.MSAsafety.com)

## Contents

|          |  |           |
|----------|--|-----------|
| <b>1</b> | <b>Safety Regulations</b> . . . . .                        | <b>4</b>  |
| 1.1      | Correct Use . . . . .                                      | 4         |
| 1.2      | Liability Information . . . . .                            | 4         |
| <b>2</b> | <b>Description</b> . . . . .                               | <b>5</b>  |
| 2.1      | Mask Versions . . . . .                                    | 6         |
|          | Special Versions for using until -40°C . . . . .           | 6         |
| 2.2      | Marking/Certification . . . . .                            | 7         |
|          | Marking . . . . .  | 7         |
|          | Special Versions for using until -40°C . . . . .           | 7         |
|          | Certification . . . . .                                    | 8         |
| <b>3</b> | <b>Use</b> . . . . .                                       | <b>10</b> |
| 3.1      | Donning the Mask . . . . .                                 | 10        |
| 3.2      | Leak Check . . . . .                                       | 11        |
| 3.3      | Removing the Mask . . . . .                                | 11        |
| <b>4</b> | <b>Cleaning, Disinfection</b> . . . . .                    | <b>12</b> |
| 4.1      | Cleaning/Disinfection with a Washing Machine . . . . .     | 12        |
| 4.2      | Cleaning/Disinfection with an Ultrasonic Cleaner . . . . . | 12        |
| 4.3      | Cleaning by Hand . . . . .                                 | 12        |
| 4.4      | Disinfection by Hand . . . . .                             | 13        |
| <b>5</b> | <b>Maintenance</b> . . . . .                               | <b>13</b> |
| 5.1      | Maintenance Instructions . . . . .                         | 13        |
| 5.2      | Maintenance Intervals . . . . .                            | 14        |
| 5.3      | Maintenance of the Exhalation Valve . . . . .              | 14        |
| 5.4      | Replacing the Speech Diaphragm . . . . .                   | 14        |
| 5.5      | Tightness Test of the Mask . . . . .                       | 15        |
| 5.6      | Visual Test and Function Test . . . . .                    | 15        |
| <b>6</b> | <b>Safekeeping and Storage</b> . . . . .                   | <b>15</b> |
| <b>7</b> | <b>Ordering Information</b> . . . . .                      | <b>16</b> |
| 7.1      | Exploded View . . . . .                                    | 16        |
| 7.2      | Full Face Mask . . . . .                                   | 17        |
| 7.3      | Accessories . . . . .                                      | 17        |
| 7.4      | Replacement Parts . . . . .                                | 18        |

# 1 Safety Regulations

## 1.1 Correct Use

Series 3S Full Face Mask with positive pressure connection according to EN 148-3 or special manufacturer type are not complete respiratory protective devices by themselves, but serve as facepieces [EN 136 CL3+] for use with respiratory filters, compressed air breathing apparatus, fresh air hose breathing apparatus and compressed air line breathing apparatus.

The mask as part of a respiratory protective device ensures an appropriately tight fit of the user's face against the ambient atmosphere.

It is imperative that this operating manual be read and observed when using the device. In particular, the safety instructions, as well as the information for the use and operation of the device, must be carefully read and observed. Furthermore, the national regulations applicable in the user's country must be taken into account for a safe use.



### WARNING!

This product is supporting life and health. Inappropriate use, maintenance or servicing may affect the function of the device and thereby seriously compromise the user's life.

Before use the product operability must be verified. The product must not be used if the function test is unsuccessful, it is damaged, a competent servicing/maintenance has not been made, genuine MSA spare parts have not been used.

---

Alternative use, or use outside this specification will be considered as non-compliance. This also applies especially to unauthorized alterations to the product and to commissioning work that has not been carried out by MSA or authorized persons.

## 1.2 Liability Information

MSA accepts no liability in cases where the product has been used inappropriately or not as intended. The selection and use of the product are the exclusive responsibility of the individual operator.

Product liability claims, warranties also as guarantees made by MSA with respect to the product are voided if it is not used, serviced, or maintained in accordance with the instructions in this manual.

Changes and modifications not expressly approved by the manufacturer will void the user's authority to operate the equipment.

## 2 Description

The face blank is made of a special soft rubber compound and assures a snug, comfortable fit and a tight seal. The face blank is also available in yellow silicone. Some versions of the mask are also available in small size.

The inhalation air flows from the connector of the mask past the inhalation valve to the inside of the lens [thus keeping the lens largely fog-free] and then through the check valves into the nose cup.

The exhalation air passes through the exhalation valve directly to the ambient air.

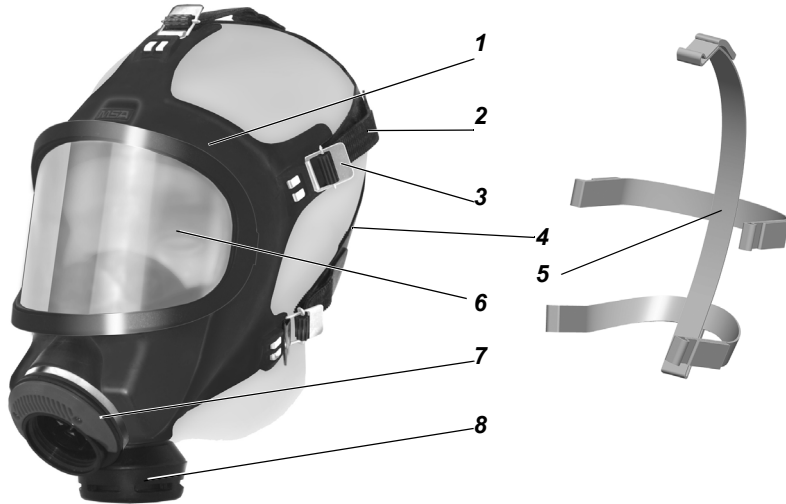


Fig. 1 Overview full face mask

- |   |                |   |                                 |
|---|----------------|---|---------------------------------|
| 1 | Face blank     | 5 | Industrial harness              |
| 2 | Head strap     | 6 | Lens                            |
| 3 | Buckle         | 7 | Connector with inhalation valve |
| 4 | Rubber harness | 8 | Exhalation valve                |

## 2.1 Mask Versions

### Standard Thread Connector M45 x 3

- 3S-PF
  - Standard version with polycarbonate lens
- 3S-PF-Vg
  - as standard version, with Triplex [laminated] glass
- 3S-PF-Si
  - as standard version, face blank, inner mask and harness made from silicone
- 3S-PF-Vg-Si
  - as standard version, face blank, inner mask and harness made from silicone, with Triplex [laminated] glass

### MSA Plug-in Connector

- 3S-PS
  - Standard version with polycarbonate lens
- 3S-PS-Vg
  - as standard version, with Triplex [laminated] glass
- 3S-PS-Si
  - as standard version, face blank, inner mask and harness made from silicone
- 3S-PS-Vg-Si
  - as standard version, face blank, inner mask and harness made from silicone, with Triplex [laminated] glass

### AutoMaXX Plug-in Connector

- 3S-PS-MaXX
  - Standard version with polycarbonate lens
- 3S-PS-MaXX-Si
  - as standard version, face blank, inner mask and harness made from silicone

### ESA Plug-in Connector

- 3S-PF-ESA
  - Standard version with polycarbonate lens
- 3S-PF-ESA-Si
  - as standard version, face blank, inner mask and harness made from silicone
- 3S-PF-ESA-Vg
  - as standard version, with Triplex [laminated] glass
- 3S-PF-ESA-Vg-Si
  - as standard version, face blank, inner mask and harness made from silicone, with Triplex [laminated] glass

## Special Versions for using until -40°C

### Standard Thread Connector M45 x 3

- 3S-PF-IH Basic
  - as standard version, with basic industrial harness, polycarbonate lens with silicate coating
- 3S-PF-IH Basic small
  - as standard version, with small size face blank, basic industrial harness, polycarbonate lens with silicate coating

### MSA Plug-in Connector

- 3S-PS-IH Basic
  - as standard version, with basic industrial harness, polycarbonate lens with silicate coating
- 3S-PS-IH Basic small
  - as standard version, with small size face blank, basic industrial harness, polycarbonate lens with silicate coating
- 3S-PS-V-MaXX (CIS)
  - as standard version, with polycarbonate lens with silicate coating
- 3S-PS-V-MaXX small (CIS)
  - as standard version, with small size face blank, polycarbonate lens with silicate coating

## 2.2 Marking/Certification

### Marking

The mask is marked on the outer face blank as shown in Fig. 2:



Fig. 2 Marking of mask body

- 1 Mask Version
- 2 Part Number
- 3 Marking [date code, serial number]
- 4 CE-marking with notified body number  
[DEKRA EXAM, Zertifizierungsstelle Dinnendahlstr. 9, 44809 Bochum]
- 5 X: ATEX classification A, B or C according to the Lens typ.
- 6 EN standard, class

### Special Versions for using until -40°C

The mask is marked on the outer face blank as shown in Fig. 3:






Fig. 3 Marking of mask body

- |                                      |   |
|--------------------------------------|---|
| 1 Part Number                        | 6 EAC conformity mark   |
| 2 Marking [date code, serial number] | 7 CE-marking with notified body number<br>[DEKRA EXAM, Zertifizierungsstelle<br>Dinnendahlstr. 9, 44809 Bochum] |
| 3 Icon "Read the Manual"             | 8 Mask Version  |
| 4 ATEX certification                 |   |
| 5 GOST Certification Number          |   |

**Certification****Mask with Lenses from Polycarbonate**

The masks according to chapter 2.1





comply with the following directives, standards or standardised documents:

|   |   |  |
|---|---|--|
| Directive 2014/34/EU [ATEX]   | : BVS 05 ATEX H 027 X   |  |
|   |   | for masks  |
|   |    | I M1<br>II 1 G IIA T6 -40 °C ≤ Ta ≤ +60 °C<br>II 1 D |
|   |    | I M1<br>II 1 G IIB T6 -40 °C ≤ Ta ≤ +60 °C<br>II 1 D |
| Directive 89/686/EC or<br>Regulation (EU) 2016/425,<br>respectively                     | :  | EN 136 CL3+<br>0158                                  |
| DEKRA EXAM GmbH, Dinnendahlstr. 9, 44809<br>Bochum, Germany, Notified body number: 0158 |   |  |

**Mask with Lenses from Triplex [laminated] Glass**

The masks according to chapter 2.1

comply with the following directives, standards or standardised documents:

|   |   |  |
|---|---|--|
| Directive 2014/34/EU [ATEX]   | : BVS 05 ATEX H 027 X   |  |
|   |   | for masks  |
|   |      | I M1<br>II 1 G IIA T6 -40 °C ≤ Ta ≤ +60 °C<br>II 1 D |
|   |     | I M1<br>II 1 G IIB T6 -40 °C ≤ Ta ≤ +60 °C<br>II 1 D |
|   |    | I M1<br>II 1 G IIC T6 -40 °C ≤ Ta ≤ +60 °C<br>II 1 D |
| Directive 89/686/EC or<br>Regulation (EU) 2016/425,<br>respectively                     | :  | EN 136 CL3+<br>0158                                  |
| DEKRA EXAM GmbH, Dinnendahlstr. 9, 44809<br>Bochum, Germany, Notified body number: 0158 |   |  |



**Special Versions for using until -40°C****Mask with Lenses from Polycarbonate**

The masks according to chapter 2.1

comply with the following directives, standards or standardised documents:

---

Directive 2014/34/EU [ATEX] : BVS 13 ATEX H 059 X Rev.1

---



I M1

II 2G IIA T6 -40 °C ≤ Ta ≤ +60 °C

II 3G IIC

II 1D

---

Directive 89/686/EC or  
Regulation (EU) 2016/425,  
respectively



EN 136 CL3

0158

---

DEKRA EXAM GmbH, Dinnendahlstr. 9, 44809  
Bochum, Germany, Notified body number: 0158

---

The Declaration of Conformity can be found under the following link:  
<https://MSAsafety.com/DoC>

### 3 Use

The mask is either carried using the harness in front of the chest or in the mask container.

In order to protect the inside of the mask from dirt, the harness hook is engaged in the front buckle when the mask is held in front of the chest.



#### WARNING!

Ensure that the top of the mask seal **only** lies on the user's forehead. Hair should not be between the mask's seal and the user's skin.

The mask could otherwise leak. This danger also exists for instance for mask wearers with beards or deep scars in the sealing area.

#### 3.1 Donning the Mask



#### WARNING!

In order to guarantee a proper fit for those wearing glasses, the 3S Full Face Mask spectacle kit **must** be worn since ordinary glasses **cannot** be worn under the mask.



- (1) Spread the harness with both hands.
- (2) Position the chin into the chin cup.
- (3) Pull the head straps over your head.  
Whilst doing so, ensure that the harness is sitting correctly and not twisted.



- (4) If necessary adjust mask and tighten the straps in order as shown firmly and evenly.

When tightening the head straps ensure that the correct sequence is followed [Figure Pos. 1 - 3, for EZ harness and IH harness Pos. 1].

When using the EZ harness if necessary readjust the head plate by pulling the loop at the back of the head.

### 3.2 Leak Check

In order to check the mask-to-face tightness a leak test must be performed before each use.



- (1) Seal the mask connector or the inlet opening side of an attached filter with the ball of your hand.
- (2) Test tightness by inhaling and exhaling. Whilst doing so: *when inhaling there must be negative pressure, no inflowing air should be noticeable.*
- (3) If necessary retighten the straps.  
If the leak test fails the mask must not be used.

### 3.3 Removing the Mask



- (1) Loosen the head harness, press the buckles forwards using your thumbs.



Do not grip the mask by the exhalation valve!



- (2) Grip the mask by the connector and pull off backwards over your head.

## 4 Cleaning, Disinfection

The cleaning and disinfection of the masks is performed in accordance with the cleaning intervals → chapter 5.2.

There are three possible kinds of cleaning:

- Using a washing machine
  - disk washing type (Meiko)
  - tumbling type (Miele)
- Using an ultrasonic cleaner
- Cleaning by hand.



### WARNING!

Do not use cleaning products containing hydrocarbons or solvents [e.g. nitro-thinner].

Cleaned parts must not be dried in radiant heat [sun, radiators]. When using a drying cabinet, the temperature must not exceed +60°C.

Perform a tightness test after every cleaning, disinfection and maintenance or after every exchange of parts.

### 4.1 Cleaning/Disinfection with a Washing Machine



Follow the washing agent's user instructions on this CD/DVD.

- (1) After cleaning check the two screws for the lens ring. Retighten the screws hand-tight if necessary.

### 4.2 Cleaning/Disinfection with an Ultrasonic Cleaner



When cleaning/disinfecting with an ultrasonic cleaner please follow the cleaning agent's user instructions on this CD/DVD.

### 4.3 Cleaning by Hand

- (1) Remove inhalation and exhalation valve discs.
- (2) Unbutton the nose cup.
- (3) Unscrew the speaking diaphragm with the special tool.
- (4) Clean mask using lukewarm water and mild cleaning agent EW 80 and thoroughly rinse in running water.
- (5) Disinfect the mask after cleaning. Removed components must be separately cleaned and disinfected.
- (6) Dry mask and components and reassemble mask in reverse order.
- (7) Perform a tightness test [→ chapter 5.5].

#### 4.4 Disinfection by Hand

---



Clean the mask before disinfecting.

Use a disinfectant according to the user instructions on this CD/DVD.

---

- (1) Disassemble and clean the mask (see chapter 4.3).
- (2) Disinfect the mask using recommended disinfectant. Please observe the user instruction for the disinfectant.
- (3) Thoroughly rinse mask in running water.
- (4) Dry mask and components and reassemble mask in reverse order.
- (5) Perform a tightness test (see chapter 5.5).

## 5 Maintenance

### 5.1 Maintenance Instructions

This device should be regularly checked and serviced by trained specialists. Inspection and service records must be maintained. Always use original parts from MSA.

Repairs and maintenance must be carried out only by authorised service centres or by MSA. Changes to devices or components are not permitted and will result in loss of approval.

MSA is liable only for maintenance and repairs carried out by MSA.

---



MSA recommends the following maintenance intervals. If necessary considering the usage, tasks may be at even shorter intervals than indicated.

Observe national laws and regulations!

If in any doubt, ask your local MSA contact person.

---

## 5.2 Maintenance Intervals

| Work to be Performed                                  | Maximal Intervals |           |                  |                 |            |                   |
|---|-------------------|-----------|------------------|-----------------|------------|-------------------|
|   | Before use        | After Use | 6-monthly        | Two years       | Four years | Six years         |
| Cleaning and Disinfection <sup>*)</sup>               |                   | X         |                  | X <sup>*)</sup> |            |                   |
| Visual, Functional and Tightness Check <sup>**)</sup> |                   | X         | X <sup>**)</sup> |                 |            |                   |
| Replacement of the exhalation valve disc              |                   |           |                  |                 | X          |                   |
| Replacement of the Speech Diaphragm                   |                   |           |                  |                 |            | X                 |
| Replacement of the O-ring for connector               |                   |           |                  | X               |            | X <sup>***)</sup> |
| User check  | X                 |           |                  |                 |            |                   |

<sup>\*)</sup> For a 2-year interval cleaned and disinfected masks have to be stored airtight. Otherwise masks should be cleaned and disinfected at least semi-annually. After each cleaning and disinfection the facepiece must be checked.

<sup>\*\*)</sup> For airtightly packed facepieces, which are not exposed to increased climatic and mechanical stress [for example transport on vehicles], this interval can be extended to 2 years.

<sup>\*\*\*)</sup> Only applicable for PS and PS-ESA

## 5.3 Maintenance of the Exhalation Valve



The year of manufacture is located on the valve disc.

In case of a leak remove the exhalation valve disc and replace it with a new one as follows:

- (1) Unscrew the threaded socket from the mask inside with the special tool.
- (2) Remove the exhalation valve disc or the complete exhalation valve assembly.
- (3) Replace the defective components.
- (4) Reassemble the parts in reverse order.
- (5) Perform a tightness test [→ chapter 5.5].

## 5.4 Replacing the Speech Diaphragm



The year of manufacture is located on the speech diaphragm.

- (1) Unbutton the nose cup.
- (2) Unscrew the threaded socket from the mask inside with the special tool.
- (3) Remove the speech diaphragm.
- (4) Assemble the new speech diaphragm with the gasket towards the connector.
- (5) Perform a tightness test [→ chapter 5.5].

## 5.5 Tightness Test of the Mask



The testing of the masks for tightness is performed using an applicable MSA test device in accordance with the relevant operating manual.

- (1) Fit mask tight onto the test instrument.
- (2) Generate a negative pressure of 10 mbar.
- (3) Measure the pressure change after 1 min.

*The mask including the exhalation valve meets the requirements if for a moistened exhalation valve and a negative pressure generated inside the mask the pressure change does not exceed 1 mbar in a minute.*

*Leaking masks must not be used.*

### Opening Pressure Test of the exhalation valve

The opening pressure of the exhalation valve has to be at least 4.2 mbar, otherwise the mask must not be used.

## 5.6 Visual Test and Function Test

### Visual Test

- (1) Inspect the mask for possible damages like for example deformations, stickings or cracks. Valve discs, especially exhalation valve discs, are crucial functional elements of the mask.
- (2) Defective or damaged parts have to be replaced immediately.

### Functional Test

After assembling the mask the mobile parts, especially the valve discs, have to be tested for unrestricted mobility.

## 6 Safekeeping and Storage



### WARNING!

In order to avoid damage to or the deformation of the masks keep no additional loose objects in the mask container.

For the safekeeping of the mask the mask container should be used. This also applies to masks with installed filters, except CO and NO filters.

MSA rubber products are protected by an anti-aging agent that can become visible as a light coating. This coating is harmless and can be removed during cleaning.

To ensure a long life for rubber components, keep them in a cool, dry place that is protected from ultra-violet radiation, according to ISO 2230:2002, Rubber Products – Guidelines for Storage.

## 7 Ordering Information

### 7.1 Exploded View

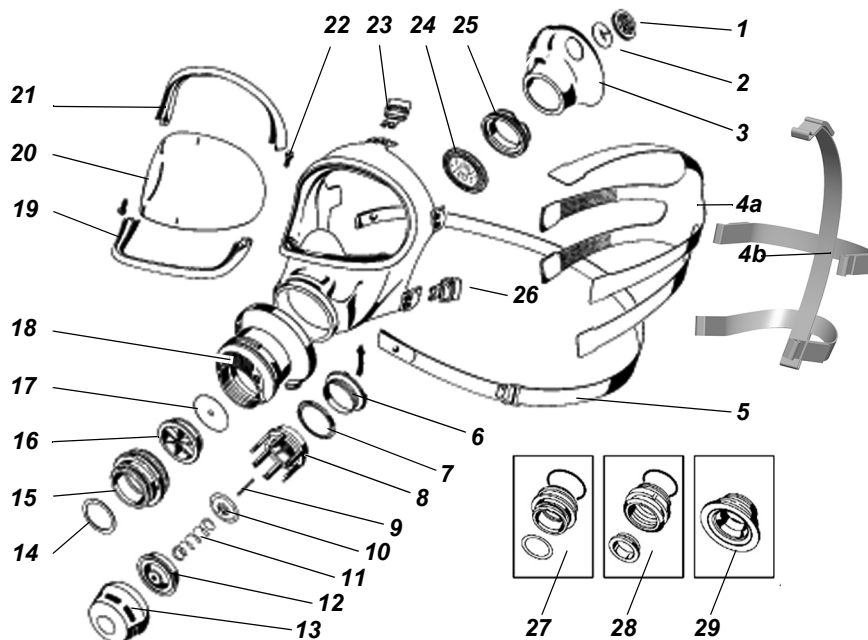


Fig. 4 Full face mask exploded view

|    |  |    |                                 |
|----|--|----|---------------------------------|
| 1  | Nose cup valve seat                        | 15 | Plug-in connector <sup>*)</sup> |
| 2  | Nose cup valve disc                        | 16 | Inhalation valve seat           |
| 3  | Nose cup [without valves]                  | 17 | Inhalation valve disc           |
| 4a | Rubber harness                             | 18 | Connector                       |
| 4b | Industrial harness                         | 19 | Lens ring                       |
| 5  | Carrying strap                             | 20 | Lens                            |
| 6  | Threaded ring                              | 21 | Lens ring                       |
| 7  | Slide ring                                 | 22 | Screw for lens ring             |
| 8  | Valve socket                               | 23 | Buckle with hook                |
| 9  | Positioning pin                            | 24 | Speech diaphragm                |
| 10 | Exhalation valve disc                      | 25 | Threaded ring                   |
| 11 | Valve spring                               | 26 | Buckle with hook and D-ring     |
| 12 | Valve cap                                  | 27 | 3S-H-ESA series                 |
| 13 | Valve cover                                | 28 | 3S-H-PF and -PS series          |
| 14 | O-ring for plug-in connector <sup>*)</sup> | 29 | 3S-H-MaXX series                |

<sup>\*)</sup> only 3S-PS Full Face Mask



## 7.2 Full Face Mask

| Description                              | Article No. |
|--|-------------|
| <b>Standard Thread Connector M45 x 3</b> |             |
| 3S-PF                                    | D2055741    |
| 3S-PF-Vg                                 | D2055783    |
| 3S-PF-Si                                 | D2055763    |
| <b>MSA Plug-in Connector</b>             |             |
| 3S-PS                                    | D2055751    |
| 3S-PS-Vg                                 | D2055785    |
| 3S-PS-Si                                 | D2055764    |
| <b>AutoMaXX Plug-in Connector</b>        |             |
| 3S-PS-MaXX                               | 10031422    |
| 3S-PS-MaXX-Si                            | 10031388    |
| <b>ESA Plug-in Connector</b>             |             |
| 3S-PF-ESA                                | 10031394    |
| 3S-PF-ESA-Vg                             | 10033206    |

### Special Versions for using until -40°C

| Description                              | Article No. |
|--|-------------|
| <b>Standard Thread Connector M45 x 3</b> |             |
| 3S-PF-IH Basic                           | 10152371    |
| 3S-PF-IH Basic small                     | 10153913    |
| <b>MSA Plug-in Connector</b>             |             |
| 3S-PS-IH Basic                           | 10152373    |
| 3S-PS-IH Basic small                     | 10153914    |
| 3S-PS-V-MaXX (CIS)                       | 10098236    |
| 3S-PS-V-MaXX small (CIS)                 | 10153912    |

## 7.3 Accessories

| Description  | Article No. |
|--|-------------|
| 3 S spectacles [plastic frame]   | D2055954    |
| 3 S spectacles [metal frame]   | D2055811    |
| Special tool<br>[for replacing exhalation valve and speech diaphragm]  | D2055038    |
| Cover lens, adhesive [package of 10]   | D2055706    |
| Exhalation valve closure   | D4074895    |
| Mask hanger [package of 4]   | D2055753    |
| Mask tightness test kit<br>[for more MSA testing instruments refer to <a href="http://www.MSAafety.com">www.MSAafety.com</a> ] | D6063705    |
| Leak test adapter M45 x 3  | D4074847    |
| Leak test adapter [for quick-connect coupling]   | D4074890    |

## 7.4 Replacement Parts

| Description                                 | Article No. |
|---|-------------|
| Nose Cup, without valves [rubber]           | D2055025-SP |
| Nose Cup, without valves [silicone]         | D2055213-SP |
| Lens [polycarbonate, package of 10]         | 10080822    |
| Lens [laminated glass]                      | D2055730    |
| Lens ring, assembly                         | D2055746    |
| Screw for lens ring [package of 10]         | D2055996    |
| Clamp [package of 10]                       | 10095118    |
| Clamp for 3S-small [package of 10]          | D0013834-SP |
| Speech diaphragm [package of 2]             | D2055708    |
| Nose cup valve seat [package of 10]         | 10096173    |
| Nose cup valve disc [package of 20]         | D2055731    |
| Threaded ring [speech diaphragm]            | D2055011-SP |
| Inhalation valve disc [package of 20]       | D2056722    |
| Inhalation valve seat [package of 5]        | D2055748    |
| <b>Exhalation valve, assembly:</b>          | D4080933    |
| Protective housing                          | D4080396-SP |
| Slide ring [package of 4]                   | 10096058    |
| Exhalation valve disc [package of 10]       | D2055749    |
| Exhalation valve spring                     | 10095813    |
| Exhalation valve cap                        | D5135702    |
| Threaded ring [exhalation valve]            | D5135041-SP |
| Valve socket                                | D4080389-SP |
| Valve spring                                | 10095813    |
| O-ring for plug-in adapter                  | D2056736    |
| Guide pin [helmet]                          | D4080394-SP |
| Head harness [rubber]                       | 10102911    |
| Head harness [silicone]                     | D2055219-SP |
| Buckle with hook [package of 10]            | 10096406    |
| Buckle with hook and D-ring [package of 10] | 10096408    |
| Carrying strap, assembly                    | D2055707-SP |
| Adapter plug-in, assembly                   | D2056727    |
| Cover                                       | 10096409    |
| Screw for cover [package of 10]             | D0012475-SP |

## Replacement Parts for -40°C versions

| Description                                      | Article No.  |
|--|--------------|
| Head harness IH                                  | 10153922- SP |
| Nose cup valve disc, silicone [package of 20]    | 10104309-SP  |
| <b>Exhalation valve P-500 A (RUS), assembly:</b> | 10031131-SP  |
| Exhalation valve cap                             | 10031132-SP  |

For local MSA contacts, please visit us at [MSAafety.com](https://www.MSAafety.com)

*Because every life has a **purpose...***