

# GALAXY GX2 System Ordering Information



	GALAXY GX2 System Test Stand (with UK Plug)			
	1 Valve (for use with 1 calibration gas cylinder)		4 Valve (for use with 1-4 calibration gas cylinders)	
	Charging*	No-Charging	Charging*	No-Charging
ALTAIR / ALTAIR PRO	/	10128663	/	10128662
ALTAIR 4/4X	10128659	10128661	10128658	10128660
ALTAIR 5/5X	10128655	10128657	10128654	10128656

\* Please contact your local MSA affiliate regarding availability.

The GALAXY GX2 System test stand comes with pre-configured plugs, barbs, fresh air filter, power supply with corresponding plug, spare parts kit (gas tubing, barbs and plugs), Ethernet cable (short cable for connection between test stands), DIN rail clip kit, and screen protector. Please see ordering information below for further system components, including electronic cylinder holder (includes regulator) or non-electronic cylinder holder (without regulator), MSA Link Pro Software, digital secure USB key, end cap, and multi-unit charger.

Part Number	Description
10105756	Electronic cylinder holder
10125135	Non-electronic cylinder holder
10127111	4 GB SD card
10123938	MSA Link Pro Software key (red)
10123937	Digital secure USB key (black)
10125907	End cap
10127423	ALTAIR 4/4X multi-unit charger
10127428	ALTAIR 5/5X multi-unit charger
10127808	Sticker or receipt / sticker printer
10126437	Detector sticker label roll (2800 labels/roll)
10126138	Receipt & sticker label roll (375 labels/roll)
10127518	12" (TBR) Ethernet cable for test stand to test stand connection
10126657	DIN rail clip kit (2 clips & screws per kit)
10062364	Type Omega DIN Rail 0.5m, perforated, steel, zinc-plated
10062365	Type Omega DIN Rail 1m, perforated, steel, zinc-plated
10062366	Type Omega DIN Rail 2m, perforated, steel, zinc-plated
10082834	USB IR dongle (for use with MSA Link Software)
10034391	Demand flow regulator (universal)
10126268	Vehicle power adapter

Part Number	Description
10128160	Calibration gas cylinder (34L) 1.45% CH <sub>4</sub> , 15% O <sub>2</sub> , 60 ppm CO, 20 ppm H <sub>2</sub> S
10053022	Calibration gas cylinder (58L) 1.45% CH <sub>4</sub> , 15% O <sub>2</sub> , 60 ppm CO, 20 ppm H <sub>2</sub> S
10122426	Calibration gas cylinder (58L) 1.45% CH <sub>4</sub> , 15% O <sub>2</sub> , 60 ppm CO, 20 ppm H <sub>2</sub> S, 10 ppm SO <sub>2</sub>
10122425	Calibration gas cylinder (34L) 1.45% CH <sub>4</sub> , 15% O <sub>2</sub> , 60 ppm CO, 20 ppm H <sub>2</sub> S, 10 ppm SO <sub>2</sub>
10102853	Calibration gas cylinder (58L) 1.45% CH <sub>4</sub> , 15% O <sub>2</sub> , 60 ppm CO, 20 ppm H <sub>2</sub> S, 2.5% CO <sub>2</sub>

## Technical Specifications

Operating Temperature	GALAXY GX2 System	0-40°C
Power Input	Power module	100-240 VAC, 47-63 Hz
	Optional vehicle module	9-32 VDC
Physical Characteristics	Test stand	Height: 11.80" (299.72 mm)
		Width: 6.50" (165.10 mm)
		Depth: 7.90" (200.66 mm)
	Cylinder holder	Height: 11.80" (299.72 mm)
		Width: 6.50" (165.10 mm)
		Depth: 6.10" (154.94 mm)
Multi-unit charger	Height: 11.80" (299.72 mm)	
	Width: 6.50" (165.10 mm)	
	Depth: 6.44" (163.58 mm)	
		Material: acrylonitrile butadiene ABS

# GALAXY<sup>®</sup> GX2 Automated Test System

## SIMPLICITY COUNTS

MSA's New GALAXY GX2 Automated Test System / Advanced Safety Management... Effortless Operation



## Your direct contact

MSA (Britain) Limited  
Lochard House  
Linnet Way  
Strathclyde Business Park  
BELLSHILL  
ML4 3RA  
Scotland  
Phone +44 (0)16 98 5733 57  
Fax +44 (0)16 98 74 01 41  
E-mail info@msabritain.co.uk

MSA Europe  
Thiemannstrasse 1  
12059 Berlin  
Germany  
Phone +49 (0)30 68 86-0  
Fax +49 (0)30 68 86-15 58  
E-mail contact@msa-europe.com

MSA International  
1000 Cranberry Woods Drive  
Cranberry Township, PA 16066  
USA  
Phone +1-724-776-8626  
Fax +1-724-741-1559  
E-mail msa.international@msanet.com

[www.MSAafety.com](http://www.MSAafety.com)



Subject to change without notice  
ID 08-531.2 UK/00

# Advanced MSA Link Pro Software

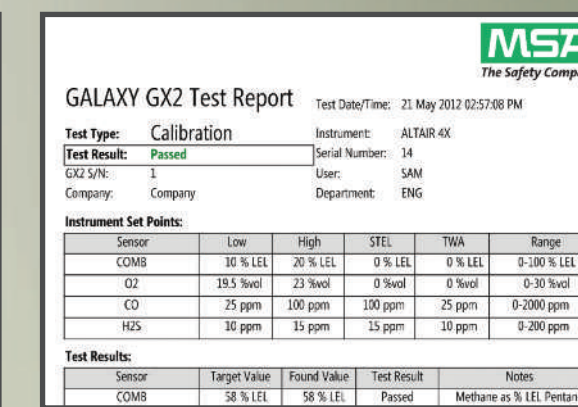
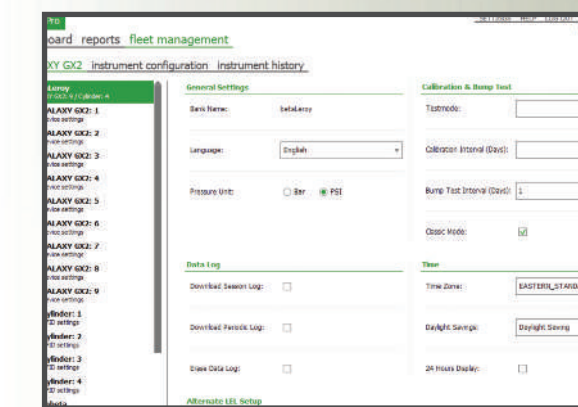
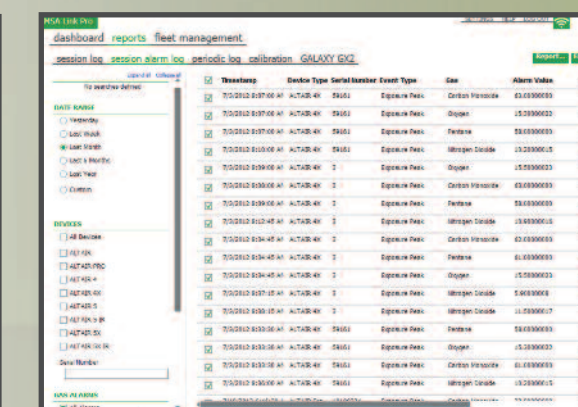
Analyze All Data, Any Time

MSA Link Pro Software lets you easily and proactively manage your gas detection fleet. Program offers efficient setup and configuration with dashboard alerts as to all conditions, as well as calibration gas and expiration warnings. Query data, print or save reports including gas exposures incidents; system can be set up to automatically send email exposure alerts. Generate session logs, including periodic as well as calibration and GALAXY GX2 System bank data. Program sends scheduled emails from master test stand based upon detector conditions and events. Directly input your data and filter results live.

View test and exposure data, session and periodic logs at a glance. Dashboard displays live status of GALAXY System test stand banks.



Live filtering can be viewed, printed and saved as PDF document.



System offers direct data input, live filtering, test and exposure queries, and detailed reports.

Print and save detailed calibration, bump test and exposure reports.



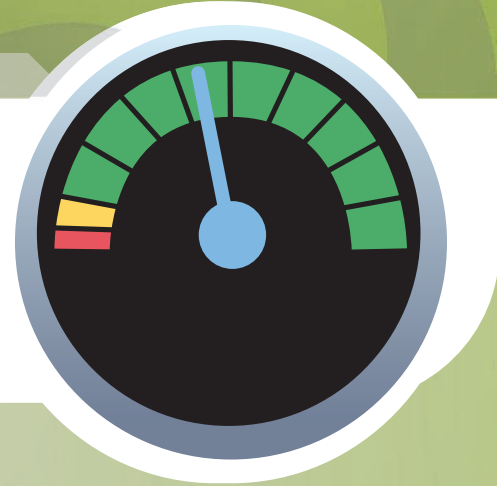


## SIMPLICITY COUNTS

The new **GALAXY GX2 Automated Test System** provides simple and intelligent testing and calibration of MSA ALTAIR® and ALTAIR PRO Single-Gas Detectors, as well as with ALTAIR 4X and ALTAIR 5X Multigas Detectors, driven by the most advanced technology available in any portable gas detector: MSA XCell® Sensors.

This easy-to-use automated test stand offers high performance as either a stand-alone unit or an integrated portable detector management system, enabling total data access and control of the MSA ALTAIR Gas Detector fleet.

Once any ALTAIR Family Gas Detector is placed within the GALAXY GX2 System, it can be tested, calibrated and charged\* automatically. Flexibility allows for up to 10 test stations, four cylinder holders and multi-unit charger within one GALAXY GX2 System detector bank.



### Ease of Use

#### Calibrate & Test Effortlessly

- Easy setup, simple use with touch-free testing.
- Color touch screen enhances user experience at the test stand.
- Can be used with a PC or as a stand-alone system, the perfect solution for large fleet end users, as well as for smaller applications.
- Automated test system and MSA Link™ Software (transfers portable gas detector records to a connected PC) provided as standard in many commonly spoken languages.
- Your ALTAIR 4X and ALTAIR 5X Multigas Detectors are always ready for use. If you're faced with an urgent, short-notice situation, these units are ready for deployment, ideal for emergency applications.\*

### Cost of Ownership

#### Save Time, Save Gas & Save Money

- Exceeds 50% reduction in cost of ownership, including calibration gas expenses when combined with high-performance MSA XCell Sensors.
- Faster total testing of ALTAIR Family Gas Detectors.
- Test up to 10 gas detectors simultaneously in the time most competitive systems take to test one device.
- RFID-tagged calibration gas cylinders to help ensure use of correct gas.

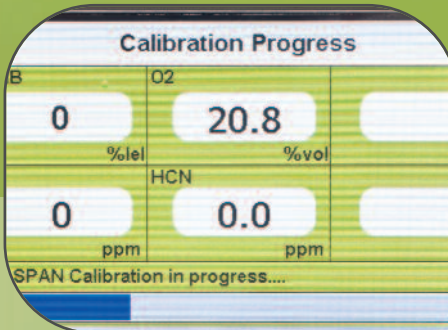
### Proactive Safety

#### Command, Control, Configure

- With MSA Link Pro Software, proactively manage safety by addressing gas exposure information and missing or failed calibrations and bump tests.
- Calibration gas and expiration warnings provided by the GALAXY GX2 System and via advanced MSA Link Pro Software.
- Print calibration stickers for gas detectors to provide easy and fast user information.
- Query the system for gas exposures, and then email responses to users.

Color touch screen for ease of setup and viewing; no touch operation is needed to calibration or bump test

Clear and intuitive navigation via large touch buttons and scrolling arrows for scrolling. When test completes, users view results on test stand popup screen and detailed information on PC dashboard.

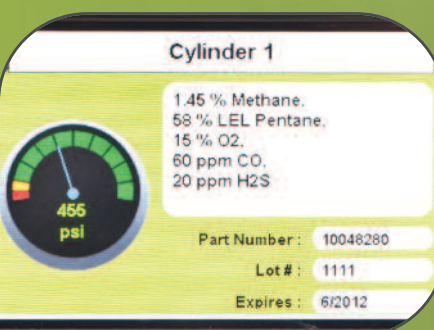


### Visual indicators on GALAXY GX2 System and software

Status at-a-glance is provided through various light indicators: test stand pass/fail LED, charging progress LEDs on multi-unit charger and lighted cylinder band on electronic cylinder holder for low gas and expiration date warning display.

RFID automated calibration gas setup, status alerts and traceability

Gas cylinder information necessary for successful calibration is automatically entered when using RFID-tagged gas cylinders, providing users with exceptionally easy setup. Onscreen gas cylinder pressure gauge shows multiple cylinder status simultaneously.



### MSA Link Pro and MSA Link Software

Redesigned software interface offers efficient setup; configure every detector's set points quickly and save settings. Overdue calibration and bump test email notifications are delivered via MSA Link Pro Software and an active network connection. Master test stand sends scheduled emails based upon detector conditions and events.



### Global platform – Many language options

18 languages are available to serve customers globally. Easily change languages via onscreen menu. Languages chosen other than English are those most widely spoken.



### Significant cost of ownership reduction

System offers more than 50% reduction in cost of ownership including calibration gas expenses when used with high-performance MSA XCell Sensors, resulting in faster total testing of ALTAIR Family Gas Detectors.

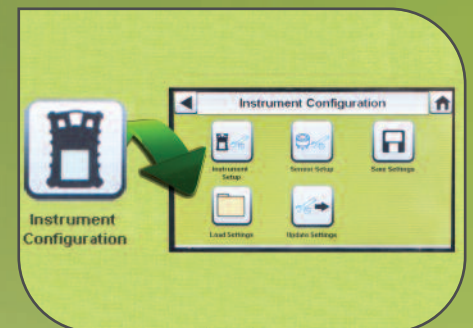
Simultaneous testing of up to 10 gas detectors

Calibrate up to 10 gas detectors simultaneously in less time than it takes most competitive units to test one. Patented gas flow process increases pressure from demand flow regulator to deliver consist gas flow from one to 10 units. Connect up to 10 test stands and four cylinder holders to perform simultaneous tests.



### Securely configure gas detectors at the touch of a button

The GALAXY GX2 Automated Test System allows users to configure many gas detector and cylinder settings at the test stand, settings that can be saved to a reusable file. Settings are stored on a digital-secure USB; no gas detector setting files are stored locally.



### MSA XCell Sensor Technology

The GALAXY GX2 Automated Test System is optimized for use with MSA's high performance XCell Sensors. Sensors offer end-of-sensor-life warning, typical life greater than four years for combustible, O<sub>2</sub>, CO/H<sub>2</sub>S, and SO<sub>2</sub> sensors and greater than three years for NH<sub>3</sub> and Cl<sub>2</sub> sensors. Bump test in less than 15 seconds, span calibration time of 60 seconds and sensor response and clear times in less than 15 seconds for most common sensor configurations.

### Your MSA multigas detectors are always ready for use

Your ALTAIR 4X and ALTAIR 5X Multigas Detectors are available to use immediately. If you're faced with an urgent, short-notice situation, these units are ready for deployment, ideal for emergency applications.\*



**THE MSA COMMITMENT.** FROM THE LATEST IN SENSOR TECHNOLOGY TO INSTRUMENT DESIGN AND MANUFACTURING, MSA HAS THE CAPABILITIES AND EXPERTISE TO SUPPORT YOUR PORTABLE GAS DETECTION CHALLENGES.

\* Please contact your local MSA affiliate regarding availability.