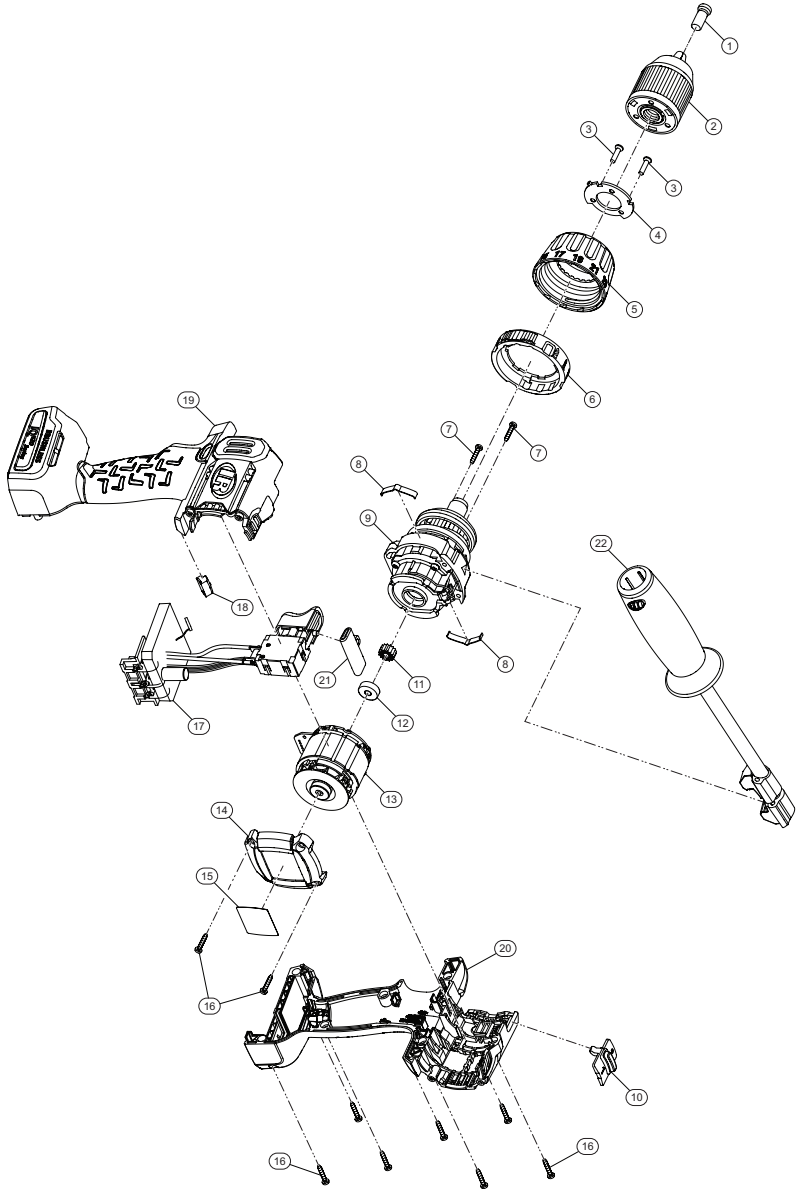


D5241, Cordless Hammer Drill/Driver - Exploded View



(Dwg. TL-D5200-PLM_1)



TL-D5200-PLM
Edition 2
May 2023

D5241, Cordless Hammer Drill/Driver - Parts List

Item	Part Description	Part Number
*	Chuck Kit	TK-D5241-255
1	Screw, Chuck	---
2	Chuck	---
*	Torque Selector and Gearbox Kit	TK-D5241-750
3	Screw Torque Selector (3 required)	---
4	Fixed Washer	---
5	Torque Selector	---
6	Mode Collar	---
7	Gearbox Screw (4 required)	---
8	Detent	---
9	Gearbox Assembly	---
10	Speed Selector Kit	TK-D5241-249
*	Motor Kit	TK-D5241-054
11	Pinion	---
12	Bearing	---
13	DC Motor Assembly	---
*	Backcap Kit	TK-D5241-042
14	Back Cap	---
15	Warning Label	---
16	Screw (4 required)	---
*	Switch and LED Kit	TK-D5241-093
17	Switch and LED Assembly	---
18	LED Cover	---
*	Housing Kit	TK-D5241-040
19	Left Housing	---
20	Right Housing	---
21	F/R Actuator	---
16	Screw (7 required)	---
22	Auxiliary Handle Kit	TK-D5241-048
*	Fastener Kit	TK-D5241-K105
3	Screw Torque Selector (3 required)	---
7	Gearbox Screw (4 required)	---
16	Screw (11 required)	---
*	20V Li-ion Battery Pack (IQV20 Series batteries)	
	2.5Ah	BL2012
	2.8Ah	BL2013
	5.0Ah	BL2022
	5.6Ah	BL2023
*	Battery Charger	
	Battery Charger, Single Bay	BC1121
	Battery Charger, Dual Bay	BC1221

* Indicates not illustrated.

Parts and Maintenance

When tool life has expired, it is recommended that the tool be disassembled, degreased and parts separated by material for proper recycling.

Tool repair and maintenance should only be carried out by an Authorized Service Center.

Refer all communications to the nearest **Ingersoll Rand** office or distributor.

Related Documentation

Manuals can be downloaded from ingersollrand.com

For additional information, refer to:

Product Safety Information Manual 04581153

Product Information Manual TL-D5200-PIM

Declaration of Conformity TL-D5200-DOC

