

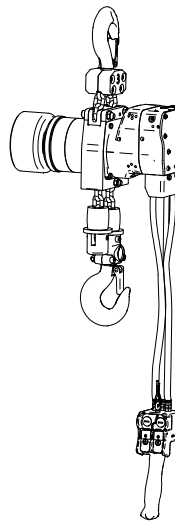
# Product Parts Information



---

## Liftchain Mining Air Hoist Models

LC2A015SM, LC2A030DM, LC2A040SM, LC2A060SM, LC2A080DM, and  
LC2A120DM



(Dwg. MHP2684)



**Save These Instructions**

Only allow **Ingersoll Rand** trained technicians to perform maintenance on this product. For additional information contact **Ingersoll Rand** factory or nearest Distributor.

**For additional supporting documentation refer to Table 1 'Product Information Manuals' on page 2. Manuals can be downloaded from [www.ingersollrandproducts.com](http://www.ingersollrandproducts.com).**

The use of other than genuine **Ingersoll Rand** replacement parts may result in safety hazards, decreased performance and increased maintenance and will invalidate all warranties. Original instructions are in English. Other languages are a translation of the original instructions. Refer all communications to the nearest **Ingersoll Rand** Office or Distributor.

**Table 1: Product Information Manuals**

Publication	Part/Document Number	Publication	Part/Document Number
Product Safety Information Manual	MHD56295	Product Maintenance Information Manual	MHD56308
Product Information Manual	MHD56307		

## TABLE OF CONTENTS

Description	Page No.	Dwg. Name	Page No.
Parts Ordering Information .....	3		
1.5 Ton Single and 3 Ton Double Powerhead and Disc Brake Assembly Drawing .....	4	(Dwg. MHP2692) .....	4
1.5 Ton Single and 3 Ton Double Powerhead and Disc Brake Assembly Parts List .....	5		
4 Ton Single and 8 Ton Double Powerhead Assembly Drawing .....	6	(Dwg. MHP3163) .....	6
4 Ton Single and 8 Ton Double Powerhead Assembly Parts List .....	7		
6 Ton Single and 12 Ton Double Powerhead Assembly Drawing .....	8	(Dwg. MHP3164) .....	8
6 Ton Single and 12 Ton Double Powerhead Assembly Parts List .....	9		
3.5 HP Motor Assembly Without Emergency Stop Adapter Drawing .....	10	(Dwg. MHP3200) .....	10
3.5 HP Motor Assembly Without Emergency Stop Adapter Parts List .....	11		
3.5 HP Motor Assembly with Emergency Stop Adapter Drawing .....	12	(Dwg. MHP3201) .....	12
3.5 HP Motor Assembly with Emergency Stop Adapter Parts List .....	13		
6 HP Motor and Disc Brake Assembly Without Emergency Stop Adapter Drawing .....	14	(Dwg. MHP3204) .....	14
6 HP Motor and Disc Brake Assembly Without Emergency Stop Adapter Parts List .....	15		
6 HP Motor and Disc Brake Assembly with Emergency Stop Adapter drawing .....	16	(Dwg. MHP3205) .....	16
6 HP Motor and Disc Brake Assembly with Emergency Stop Adapter Parts List .....	17		
Two Function Pendant Control Assembly Without Emergency Stop Parts Drawing .....	18	(Dwg. MHP3040) .....	18
Two Function Pendant Control Assembly Without Emergency Stop Parts List .....	19		
Two Function Pendant Control Assembly with Emergency Stop Drawing .....	20	(Dwg. MHP3039) .....	20
Two Function Pendant Control Assembly with Emergency Stop Parts List .....	21		
Top Hook Assemblies Drawing and Parts List .....	22	(Dwg. MHP3206) .....	22
1.5 and 3 Ton Bottom Block Assembly Drawing and Parts List .....	23	(Dwg. MHP3203) .....	23
4, 6, 8 and 12 Ton Bottom Block Assembly Drawing and Parts List .....	24	(Dwg. MHP3006) .....	24
Bottom Hook Accessories Parts Drawing and Parts List .....	25	(Dwg. MHP1431) .....	25
Label and Tag Placement Assembly Drawing and Parts List .....	26	(Dwg. MHP3081) .....	26

---

## PARTS ORDERING INFORMATION

---

These products are designed and constructed to provide long, trouble-free service. In time it may be necessary to order and install new parts to replace those that have been subjected to wear.

For your convenience and future reference, it is recommended that the following information be recorded.

Model Number \_\_\_\_\_

Serial Number \_\_\_\_\_

Date Purchase \_\_\_\_\_

When ordering replacement parts, please specify the following:

1. Complete model number and serial number as it appears on the data (name) plate.
2. Part number(s) and part description as shown in this manual.
3. Quantity required.

The data (name) plate is located on the product.

### NOTICE

- Continuing improvement and advancement of design may cause changes to this equipment which are not included in this manual. Manuals are periodically revised to incorporate changes. Always check the manual edition number on the front cover for the latest issue.
- Sections of this manual may not apply to your product.
- The use of other than genuine Ingersoll Rand replacement parts may result in safety hazards, decreased performance and increased maintenance, and will invalidate all warranties.

---

### ■ Return Goods Policy

Ingersoll Rand will not accept any returned goods for warranty or service unless prior arrangements have been made and written authorization has been provided from the location the goods were purchased.

Products that have been modified without Ingersoll Rand approval, mishandled or overloaded will not be repaired or replaced under warranty. A printed copy of the warranty that applies to this product is provided inside the back cover of the product information manual or in some cases the parts manual.

### ■ Disposal



When the life of the product has expired, it is recommended that it be disassembled, degreased and parts separated as to materials so that they may be recycled.

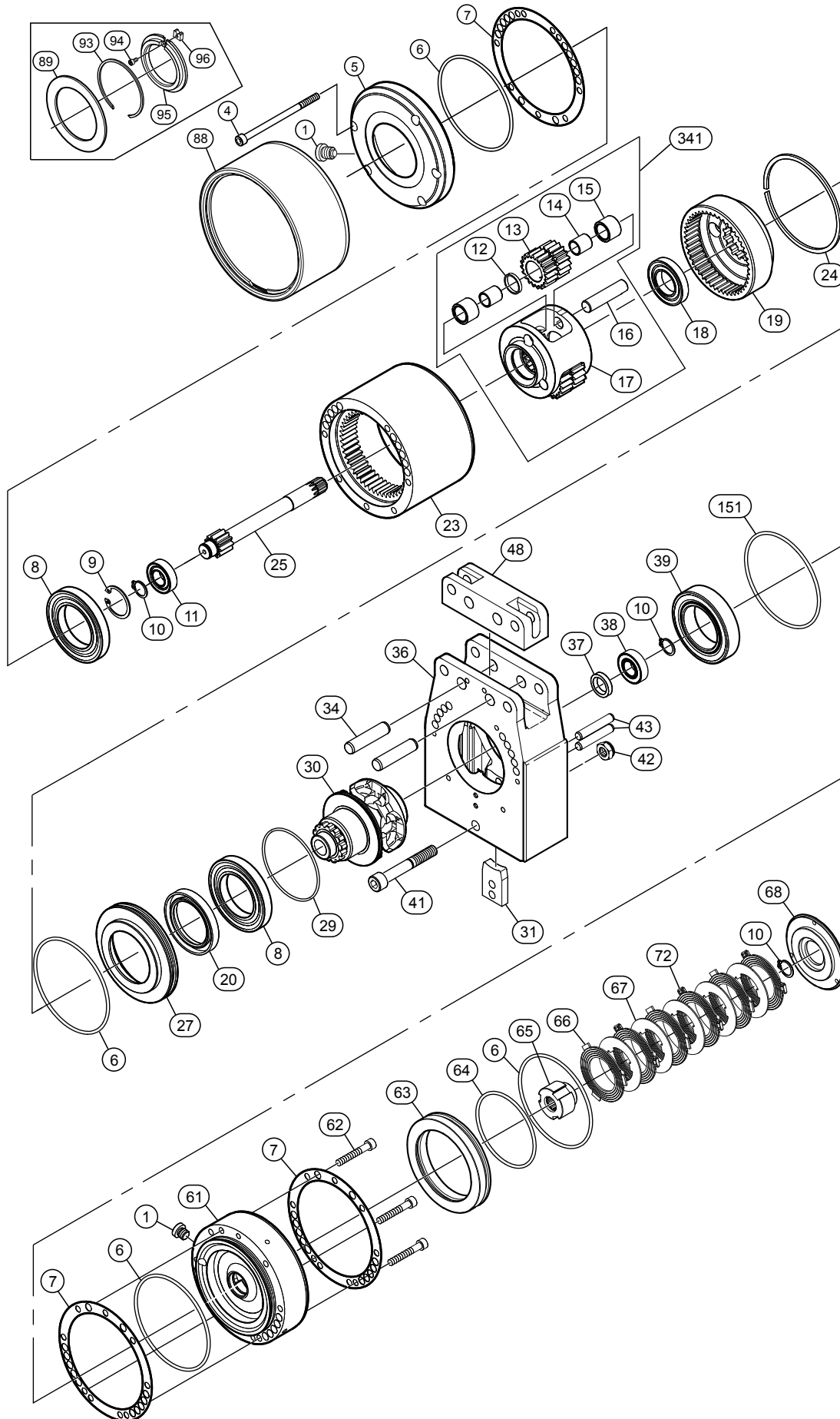
For additional information contact:

**Ingersoll Rand**  
20017 72nd Avenue South  
Kent, WA 98032 USA  
Phone: (877) 584-0370  
Fax: (206) 624-6265

or

**Ingersoll Rand  
Douai Operations**  
529, Avenue Roger Salengro  
59450 Sin Le Noble, France  
Phone: (33) 03-27-93-08-08  
Fax: (33) 03-27-93-08-00

# 1.5 TON SINGLE AND 3 TON DOUBLE POWERHEAD AND DISC BRAKE ASSEMBLY DRAWING



(Dwg. MHP2692)

## 1.5 TON SINGLE AND 3 TON DOUBLE POWERHEAD AND DISC BRAKE ASSEMBLY PARTS LIST

Item No.	Description of Parts	Total Qty	Part Number	Item No.	Description of Parts	Total Qty	Part Number
• 1	Plug	2	6511-0441	• 37	Oil Seal	1	5801-9830
4	Capscrew	5	4133-2506	38	Bearing	1	5005-0002
5	Reduction Gear End Cover (old style)	1	9644-3008	39	Bearing	1	5005-0009
	Reduction Gear End Cover (new style)	1	9644-0817	41	Capscrew	3	4132-9406
• 6	'O' Ring	4	5823-5229	42	Nut	3	75583M
• 7	Gasket	3	9644-1048	43	Pin	2	4600-2816
8	Bearing	2	5080-0009	48	Support	1	9644-3289
9	Retainer Ring	1	4770-3032	61	Brake Housing <b>(Note 2)</b>	1	9644-0574
• 10	Retainer Ring	3	4770-0015	62	Capscrew	3	4130-1106
11	Bearing	1	5000-0002	63	Piston	1	9644-1014
12	Spacer	3	9644-1047	• 64	'O' Ring	1	5823-5129
13	Planetary Gear	3	9644-1002	65	Splined Hub	1	9644-1013
14	Bearing Ring	6	5636-2041	66	Friction Plate <b>(Note 2)</b>	3	6302-8241
15	Needle Bearing	6	5656-2141	67	Drive Plate <b>(Note 2)</b>	5	6302-8341
16	Planet Axle	3	9644-1046	68	Brake Reaction Plate	1	9644-1015
17	Planetary Carrier	1	9644-1006	72	Friction Plate with Spring Clips <b>(Note 2)</b>	3	9644-1552
18	Bearing	1	5080-0005	88	Muffler Assembly	1	3644-0567
19	Ring Gear	1	9644-1003	89	Ring Flat <b>(Note 3)</b>	1	9644-0566
• 20	Oil Seal	1	5801-2130	93	Expansive Ring <b>(Note 3)</b>	1	4789-8541
23	Reducer Housing	1	9644-1007	94	Capscrew <b>(Note 3)</b>	1	4130-9606
24	Stop Ring	1	4782-9332	95	Adapter Support <b>(Note 3)</b>	1	9644-0564
25	Pinion Shaft	1	9644-3005	96	Plate Stop <b>(Note 3)</b>	1	9644-0565
27	Cover	1	9644-3009	97	Cover, Muffler †	1	9645-0401
• 29	Quad Ring	1	5823-7329	98	Capscrew †	3	4102-0301
30	Sprocket	1	9644-3039	99	Nut †	3	4520-1006
31	Chain Stripper	1	9644-3288	151	Gasket	1	9644-1503
34	Dowel Pin	2	9644-3245	• 157	'O' Ring	1	5823-9129
36	Hoist Body	1	9644-3286	341	Planetary Support Assembly <b>(Note 1)</b>	1	7644-0759

• Recommended spares, 2 years operation (ordering kits listed below is recommended).

† Items not illustrated.

**Note 1:** Do not disassemble planet support assembly item 341.

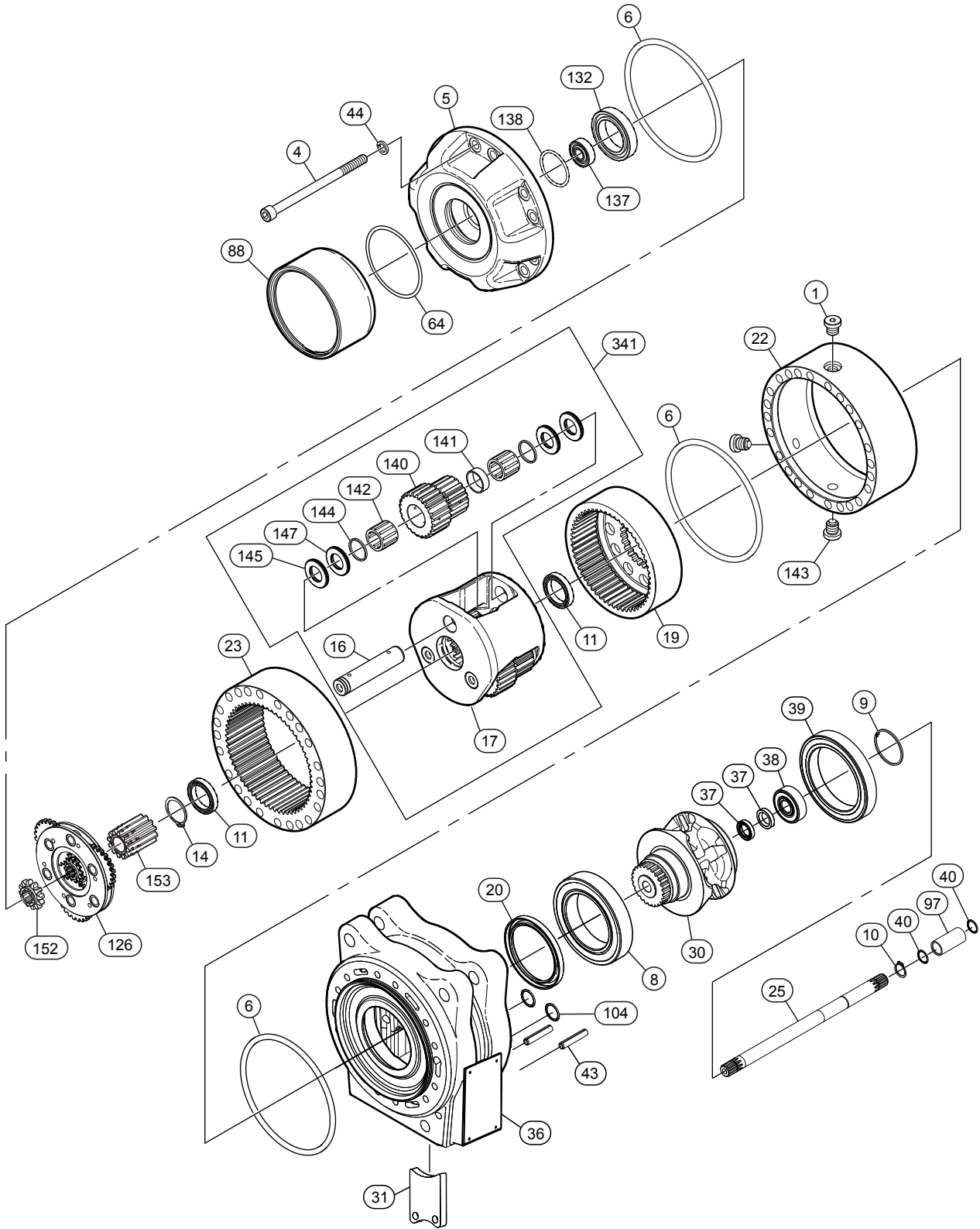
**Note 2:** When ordering disc brake replacement parts a new motor housing is required, refer to MHP2652. This change effects hoists with serial numbers of 08-04-52 and below.

**Note 3:** Parts used with old style end cover item 5.

### Kit Repair List:

Item No.	Description of Parts	Total Qty	Part Number
• 700	Reducer Repair Kit (includes items 1, 4, 6 - 11, 14, 15, 18 and 20)	1	7650-0092
• 701	Disc Brake Repair Kit (includes items 1, 6, 7, 10, 62, 64, 66, 67, and 72)	1	7650-0089

# 4 TON SINGLE AND 8 TON DOUBLE POWERHEAD ASSEMBLY DRAWING



(Dwg. MHP3163)

## 4 TON SINGLE AND 8 TON DOUBLE POWERHEAD ASSEMBLY PARTS LIST

Item No.	Description of Parts	Total Qty	Part Number	Item No.	Description of Parts	Total Qty	Part Number
• 1	Plug	2	6511-0741	• 40	'O' Ring	2	5821-8129
4	Capscrew	12	4133-4506	43	Pin	2	4650-5520
5	Reduction Gear End Cover	1	9645-0029	44	Lockwasher	12	4520-1010
• 6	'O' Ring	3	5824-0029	• 64	'O' Ring	1	5820-8529
8	Bearing	1	5005-0014	88	Muffler Assembly	1	3644-0567
9	Retainer Ring	1	4770-3042	97	Spacer Ring	1	9645-0143
• 10	Retainer Ring	1	4770-0015	• 104	'O' Ring	2	5822-2829
11	Bearing	2	5090-0006	126	Primary Gear Assembly	1	7645-0075
14	Retainer Ring	1	4770-0030	132	Bearing	1	5090-0008
16	Planet Axle	3	9645-0025	137	Bearing	1	5010-0001
17	Planetary Carrier	1	9645-0020	• 138	'O' Ring	1	5822-4229
19	Ring Gear	1	9645-0017	140	Planetary Gear	3	9645-0018
20	Oil Seal	1	5801-5130	141	Spacer	3	9645-0151
22	Reducer Housing	1	9645-0121	142	Needle Bearing	6	5650-2825
23	Ring Gear	1	9645-0010	143	Plug	1	6517-0241
25	Pinion Shaft	1	9645-0046	144	Spacer	6	9645-0045
30	Sprocket	1	9645-0041	145	Needle Bearing Spacer	6	5605-3520
31	Chain Stripper	1	9645-0062	147	Needle Bearing	6	5731-9832
36	Hoist Body	1	9645-0047	152	Sun Gear	1	9645-0036
• 37	Oil Seal	2	5801-9830	153	Sun Gear	1	9645-0038
38	Bearing	1	5025-0002	341	Planet Support Assembly ( <b>Note 1</b> )	1	7645-0074
39	Bearing	1	5090-0016				

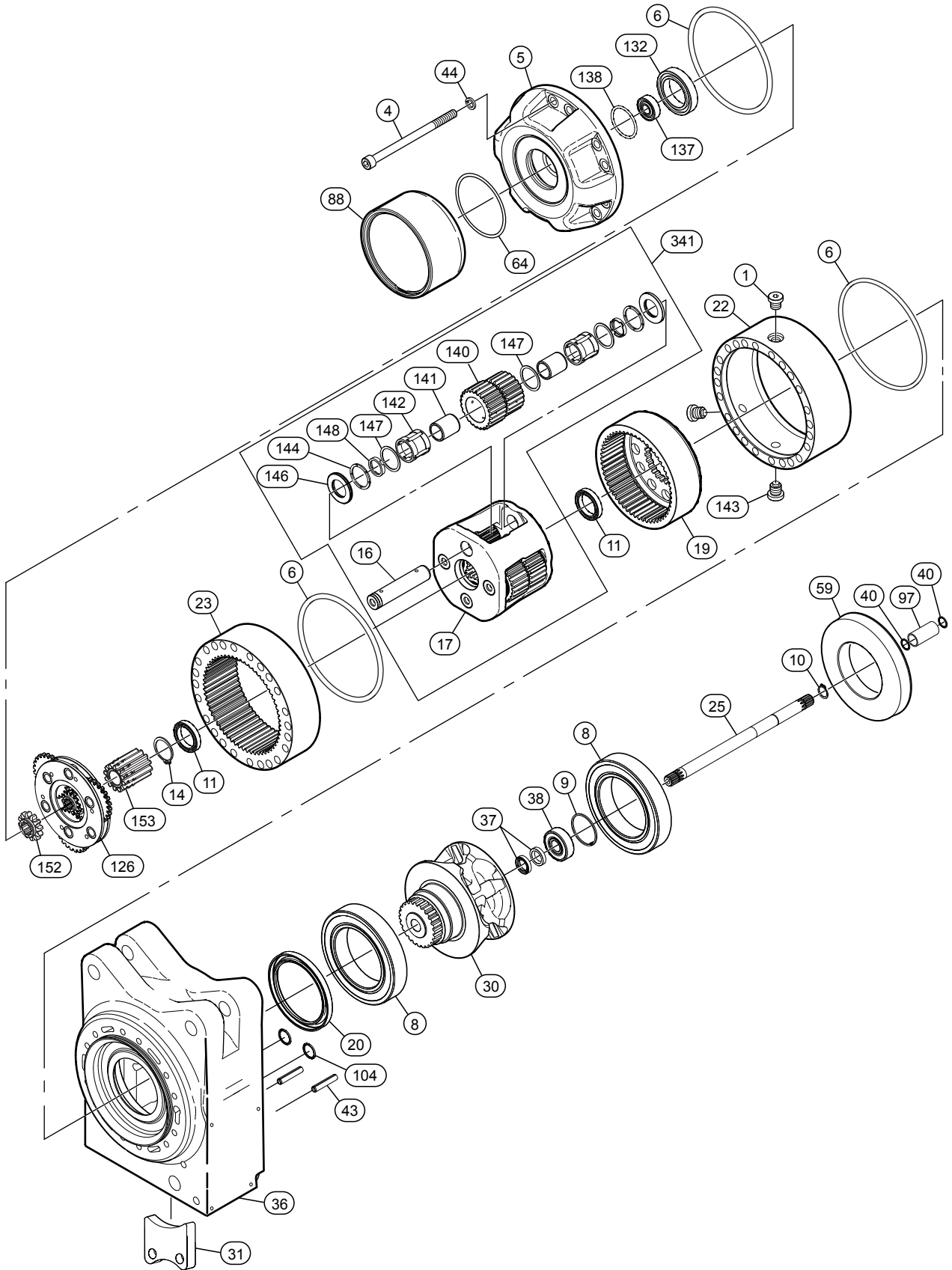
• Recommended spares, 2 years operation (ordering kit listed below is recommended).

**Note 1:** Do not disassemble planet support assembly item 341.

### Kit Repair List:

Item No.	Description of Parts	Total Qty	Part Number
• 705	Reducer Repair Kit (includes items 1, 4, 6, 10, 11, 14, 16, 26, 44, 75, 76, 126, 132, 137, 138, 141 – 145 and 147)	1	7650-0224

# 6 TON SINGLE AND 12 TON DOUBLE POWERHEAD ASSEMBLY DRAWING



(Dwg. MHP3164)



## 6 TON SINGLE AND 12 TON DOUBLE POWERHEAD ASSEMBLY PARTS LIST

Item No.	Description of Parts	Total Qty	Part Number	Item No.	Description of Parts	Total Qty	Part Number
1	Plug	2	6511-0741	43	Pin	2	4650-5520
4	Capscrew	12	4133-4506	44	Lockwasher	12	4520-1010
5	Reduction Gear End Cover	1	9645-0029	59	Adapter Ring	1	9649-0069
• 6	'O' Ring	3	5824-0029	• 64	'O' Ring	1	5820-8529
8	Bearing	2	5005-0015	88	Muffler Assembly	1	3644-0567
9	Retainer Ring	1	4770-3042	97	Spacer Ring	1	9645-0143
• 10	Retainer Ring	1	4770-0015	• 104	'O' Ring	2	5822-2829
11	Bearing	2	5090-0006	126	Primary Gear Assembly	1	7645-0075
14	Retainer Ring	1	4770-0030	132	Bearing	1	5090-0008
16	Planet Axle	4	9645-0024	137	Bearing	1	5010-0001
17	Planetary Carrier	1	9645-0019	• 138	'O' Ring	1	5822-4229
19	Ring Gear	1	9645-0011	140	Planetary Gear	4	9645-0012
• 20	Oil Seal	1	5801-5130	141	Internal Bearing Ring	8	5630-0642
22	Reducer Housing	1	9645-0121	142	Needle Bearing	8	5650-3530
23	Ring Gear	1	9645-0010	143	Plug	1	6517-0242
25	Pinion Shaft	1	9645-0033	144	Needle Bearing	8	5731-2632
30	Sprocket	1	9645-0043	146	Needle Bearing Spacer	8	5605-4225
31	Chain Stripper	1	9645-0064	147	Spacer	12	9645-0136
36	Hoist Body	1	9645-0048	148	Ring	8	9645-0137
• 37	Oil Seal	2	5801-9830	152	Sun Gear	1	9645-0036
38	Bearing	1	5025-0002	153	Sun Gear	1	9645-0038
• 40	'O' Ring	2	5821-8129	341	Planet Support Assembly (Note 1)	1	7645-0134

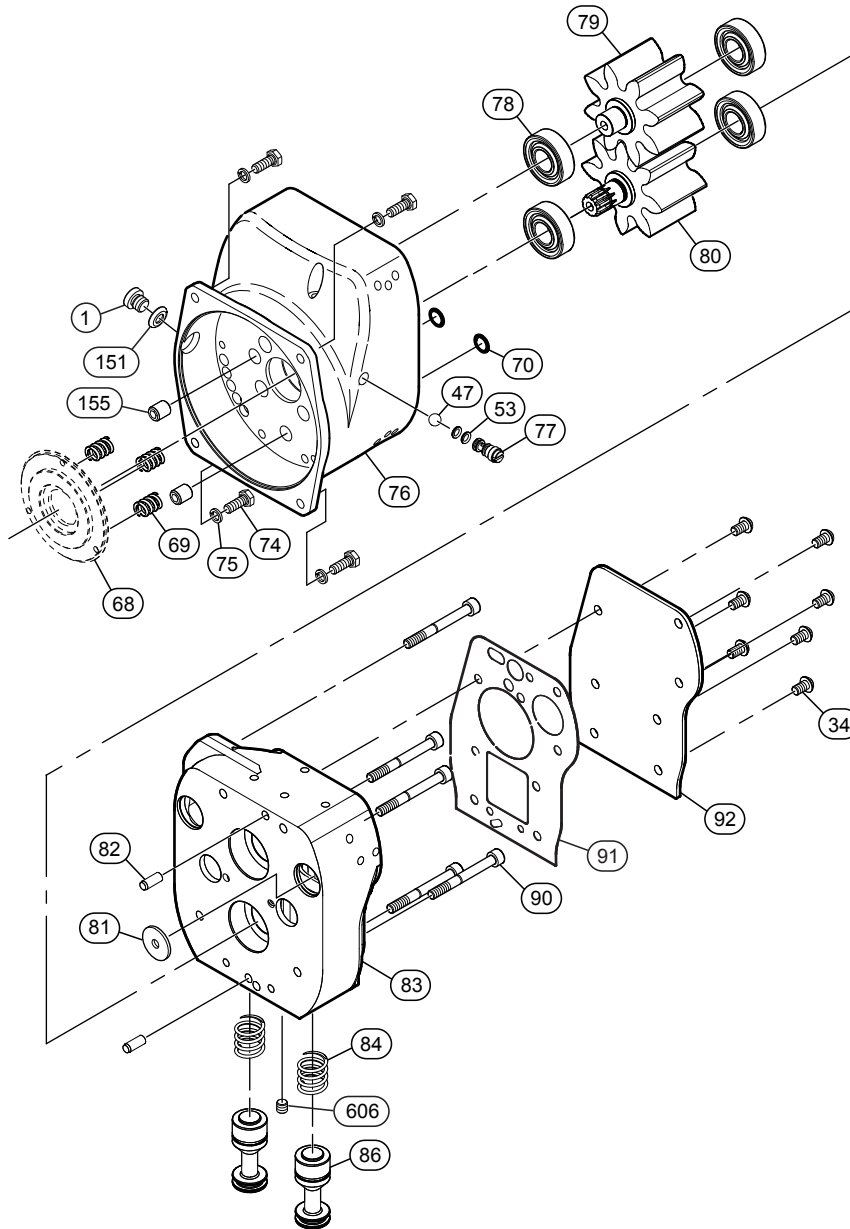
• Recommended spares, 2 years operation (ordering kit listed below is recommended).

**Note 1:** Do not disassemble planet support assembly item 341.

### Kit Repair List:

Item No.	Description of Parts	Total Qty	Part Number
• 711	Reducer Repair Kit (includes items 1, 4, 6, 10, 11, 14, 132, 137, and 141 - 148 )	1	7650-0230

# 3.5 HP MOTOR ASSEMBLY WITHOUT EMERGENCY STOP ADAPTER DRAWING



(Dwg. MHP3200)

### 3.5 HP MOTOR ASSEMBLY WITHOUT EMERGENCY STOP ADAPTER PARTS LIST

Item No.	Description of Parts	Total Qty	Part Number	Item No.	Description of Parts	Total Qty	Part Number
800	Motor Assembly	1	7644-3303	81	Exhaust Washer	1	9644-1145
1	Plug	1	6511-0441	82	Pin	2	4600-1116
34	Capscrew	7	4120-1604	83	Motor Cover	1	9644-0515
47	Ball	1	6940-1625	84	Spring	2	6919-0341
• 53	'O' Ring	2	5820-9229	86	Valve Assembly (includes 'O' Rings)	2	7644-1356
69	Springs	3	6916-5532	90	Capscrew	5	4133-2206
• 70	'O' Ring	2	5823-7429	• 91	Gasket	1	9644-1188
• 74	Capscrew	4	4102-3001	92	Cover Plate	1	9644-1027
• 75	Lockwasher	4	4520-1006	151	Gasket	1	9644-1503
76	Motor Housing (new style) <b>(Note 1)</b>	1	9644-0575	155	Plug	2	9644-0725
77	Check Valve	1	9579-0106	606	Setscrew	3	4200-7407
78	Bearing	4	5016-0002				
79	Idle Gear **	1	7644-1256				
80	Drive Gear **	1					

• Recommended spares, 2 years operation (ordering kits listed below is recommended).

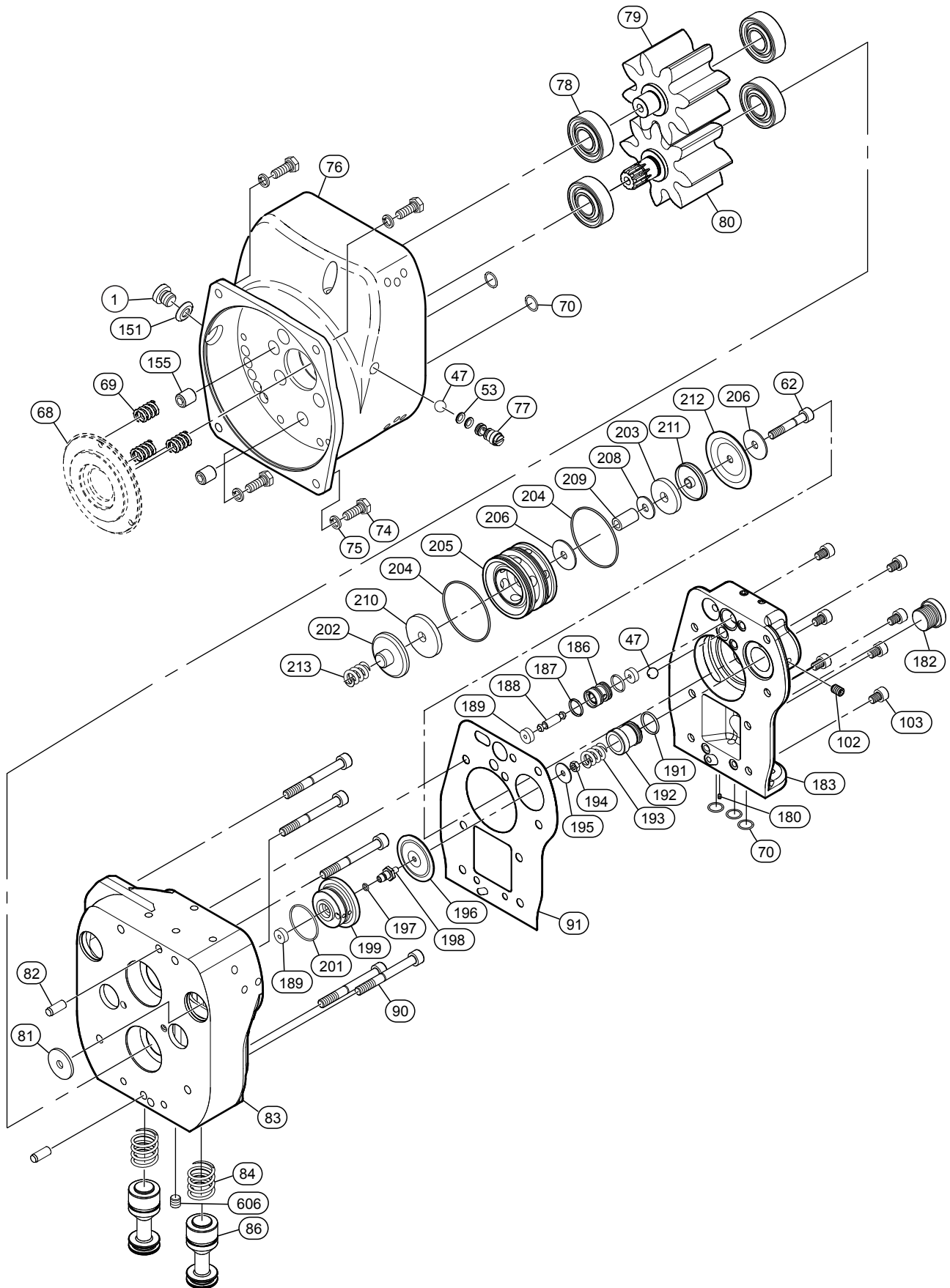
\*\* Idle Gear (79) and Drive Gear (80) are not sold separately.

**Note 1:** Old Style motor housing used on hoist with serial number 08-04-52 and below. When ordering any new brake parts a new motor housing is required.

**Kit Repair List:**

Item No.	Description of Parts	Total Qty	Part Number
• 719	3.5 HP Motor Repair Kit (includes items 7, 34, 47, 53, 70, 74, 75, 77, 78, 81, 82, 84, 86, 87, 90, 91, 607 and 612)	1	7650-0133

### 3.5 HP MOTOR ASSEMBLY WITH EMERGENCY STOP ADAPTER DRAWING



(Dwg. MHP3201)

### 3.5 HP MOTOR ASSEMBLY WITH EMERGENCY STOP ADAPTER PARTS LIST

Item No.	Description of Parts	Total Qty	Part Number	Item No.	Description of Parts	Total Qty	Part Number
800	Motor Assembly	1	contact factory	79	Idle Gear **	1	7644-1256
1	Plug	1	6511-0441	80	Drive Gear **	1	
47	Ball	1	6940-1625	81	Exhaust Washer	1	9644-1145
• 53	'O' Ring	2	5820-9229	82	Pin	2	4600-1116
68	Brake Reaction Plate	1	9644-1015	83	Motor Cover (for Emergency Stop Adapter)	1	9644-1023
69	Springs	3	6916-5532	84	Spring	2	6919-0341
• 70	'O' Ring	2	5823-7429	86	Valve Assembly (includes 'O' Rings)	2	7644-1356
• 74	Capscrew	4	4102-3001	90	Capscrew	5	4133-2206
• 75	Lockwasher	4	4520-1006	• 91	Gasket	1	9644-1188
76	Motor Housing (new style) (Note 1)	1	9644-0575	151	Gasket	1	9644-1503
	Motor Housing (old style) (Note 1)		9644-1016	155	Plug	2	9644-0725
77	Check Valve	1	9579-0106	606	Setscrew	3	4200-7406
78	Bearing	4	5016-0002				

**Emergency Stop Adapter for Pendant Control Parts List:**

Item No.	Description of Parts	Total Qty	Part Number	Item No.	Description of Parts	Total Qty	Part Number
47	Ball	1	6940-1625	• 196	Diaphragm	1	9644-1097
62	Capscrew	1	4130-1106	• 197	'O' Ring	1	5822-2329
• 70	'O' Ring	3	5823-7429	• 198	Plunger	1	9636-0017
102	Setscrew	1	4200-9207	199	Base Plate	1	9644-1095
103	Capscrew	7	4133-2306	• 201	'O' Ring	1	5823-7029
180	Nozzle	1	9644-1187	202	Cap	1	9644-1101
182	Plug	1	6512-8928	• 203	Seal	1	9617-0056
183	Emergency Stop End Cover	1	9644-1077	• 204	'O' Ring	2	5823-7129
186	Valve Seat	1	9644-1106	205	Valve Seat	1	9644-1098
• 187	'O' Ring	2	5820-5029	206	Washer	2	4570-1006
• 188	Axle	1	9644-1105	208	Washer	1	4560-1006
• 189	Seal	3	9644-1103	209	Sleeve	1	9644-1102
• 191	'O' Ring	1	5821-1729	• 210	Seal	1	9644-1104
192	Regulating Screw	1	9644-1096	211	Cap	1	9644-1100
193	Spring	1	6913-7041	• 212	Diaphragm	1	9644-1099
194	Stop Nut	1	4300-1111	213	Spring	1	6915-8732
195	Washer	1	4570-1004				

• Recommended spares, 2 years operation (ordering kits listed below is recommended).

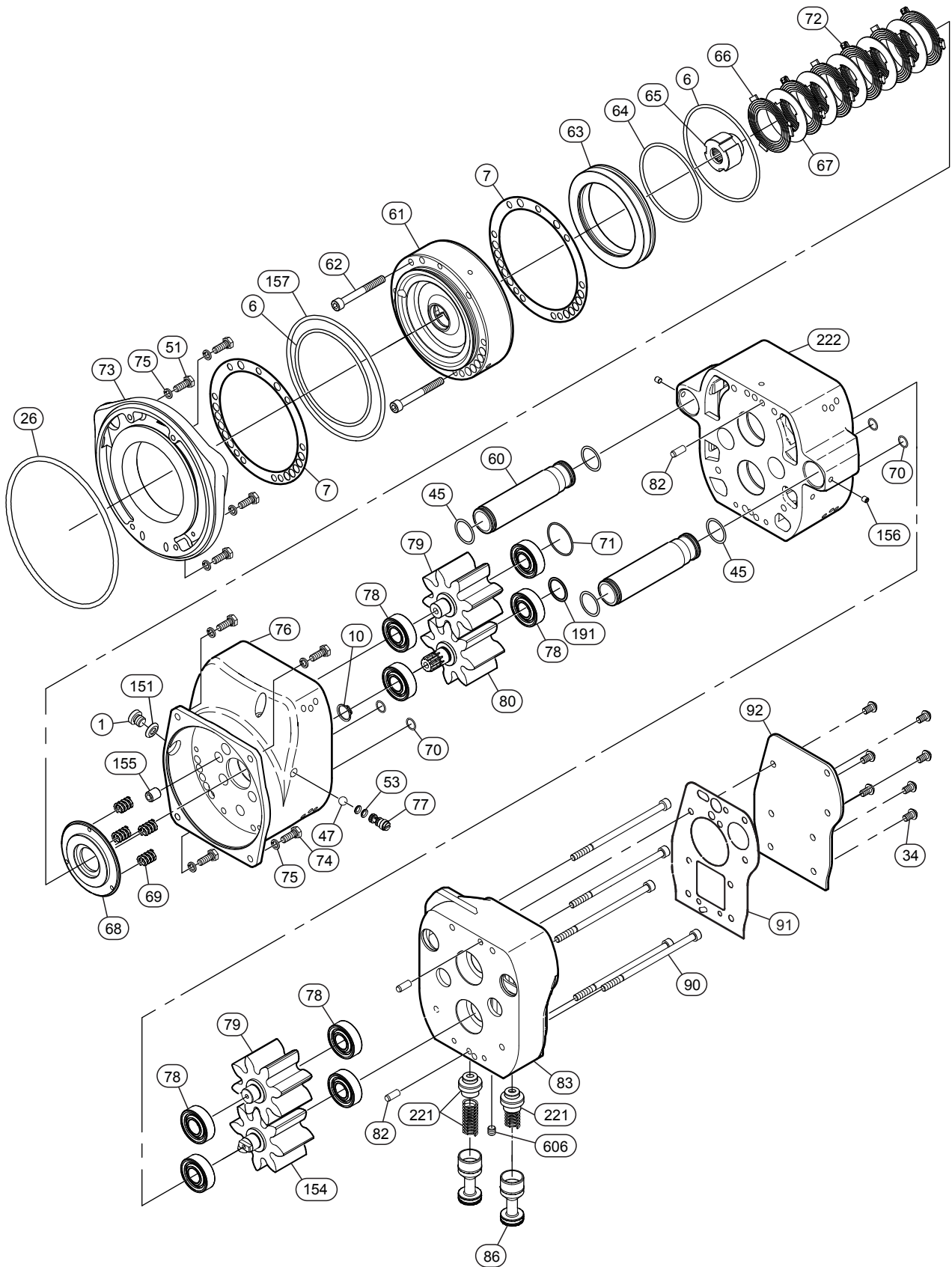
\*\* Idle Gear (79) and Drive Gear (80) are not sold separately.

**Note 1:** Old Style motor housing used on hoist with serial number 08-04-52 and below. When ordering any new brake parts a new motor housing is required.

**Kit Repair List:**

Item No.	Description of Parts	Total Qty	Part Number
• 720	3.5 HP Motor for Emergency Stop Version Repair Kit (includes items 7, 34, 47, 53, 70, 74, 75, 77, 78, 81, 82, 84, 85, 87, 90, 91, 103, 180, 194, 195, 198, 209, 607 and 612)	1	7650-0135

# 6 HP MOTOR AND DISC BRAKE ASSEMBLY WITHOUT EMERGENCY STOP ADAPTER DRAWING



(Dwg. MHP3204)

## 6 HP MOTOR AND DISC BRAKE ASSEMBLY WITHOUT EMERGENCY STOP ADAPTER PARTS LIST

Item No.	Description of Parts	Total Qty	Part Number	Item No.	Description of Parts	Total Qty	Part Number
802	Motor Assembly (without Disc Brake)	1	3645-0384	73	End Cover	1	9645-0044
• 1	Plug	1	6511-0441	74	Capscrew	4	4102-3001
• 6	'O' Ring	2	5823-5229	75	Washer	8	4520-1006
• 7	Gasket	2	9644-1048	76	Motor Housing	1	9644-0575
• 10	Retainer Ring	1	4770-0015	77	Check Valve	1	9579-0106
• 26	'O' Ring	1	5823-9329	78	Bearing	8	5016-0002
34	Capscrew	7	4120-1604	79	Idle Gear **	Set	7644-1788
45	'O' Ring	4	5822-0129	80	Drive Gear **		
47	Ball	1	6940-1625	82	Pin	4	4600-1116
51	Capscrew	4	4131-2206	83	Motor Cover	1	9644-0515
• 53	'O' Ring	2	5820-9229	86	Valve Assembly (includes 'O' Rings)	2	7645-0379
60	Exhaust Pipe	2	9645-0031	90	Capscrew	5	4133-2406
61	Brake Housing	1	9644-0574	• 91	Gasket	1	9644-1188
62	Capscrew	2	4132-2306	92	Cover Plate	1	9644-1027
63	Piston	1	9644-1014	151	Gasket	1	9644-1503
• 64	'O' Ring	1	5823-5129	154	Drive Gear for Second Step **	Set	7644-1788
65	Splined Hub	1	9644-1013	155	Plug	2	9644-0725
66	Friction Plate	3	6302-8241	156	Setscrew	5	4200-7407
67	Drive Plate	5	6302-8341	• 157	'O' Ring	1	5823-9129
68	Brake Reaction Plate	1	9644-1015	• 191	'O' Ring	1	5821-1729
69	Spring	4	6916-5532	221	Spring Assembly	2	9645-0380
• 70	'O' Ring	4	5823-7429	222	Motor Cover	1	9644-1364
• 71	'O' Ring	1	5823-9529	606	Setscrew	3	4200-7406
72	Friction Plate with Spring Clips	3	9644-1552				

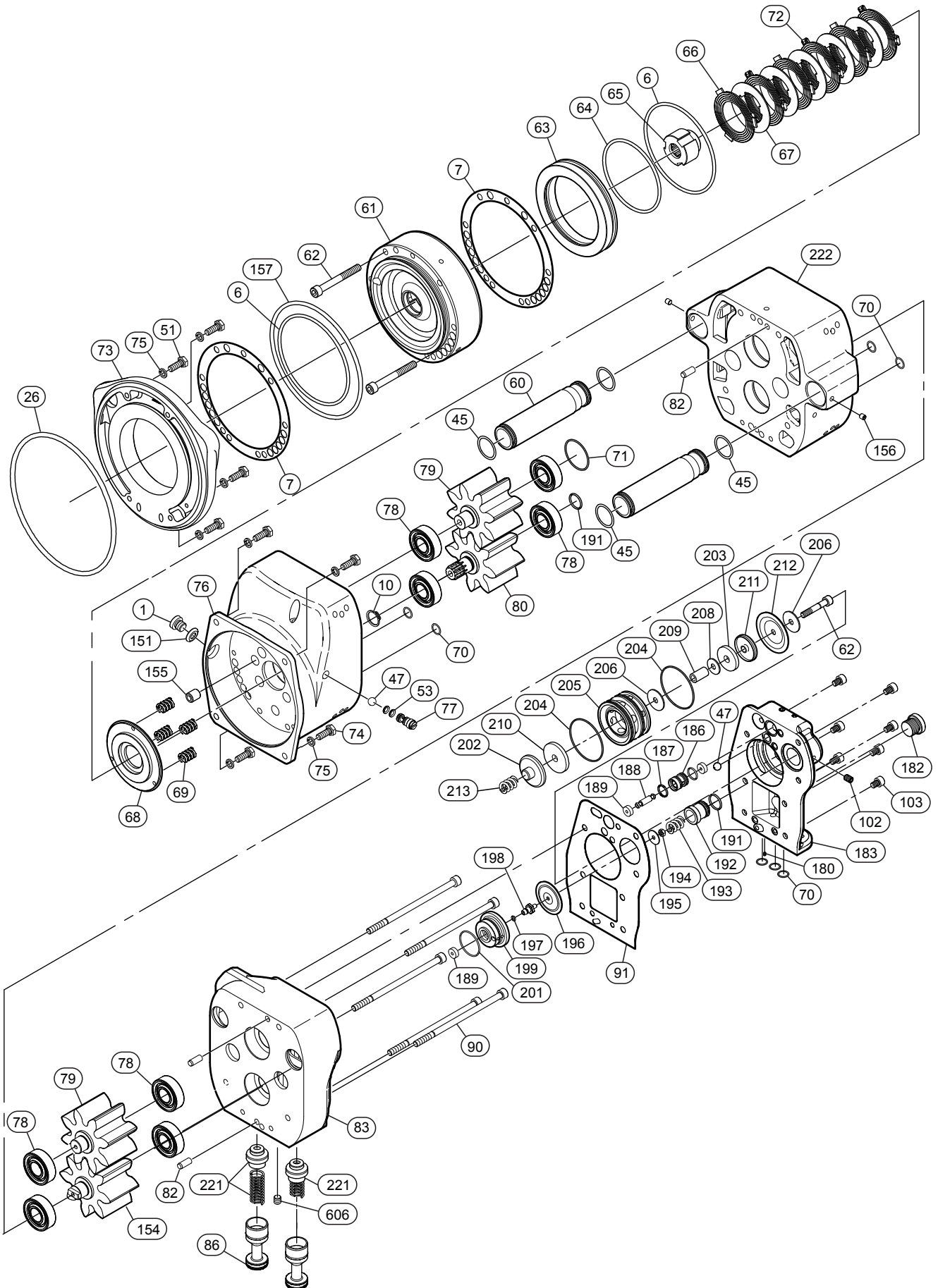
• Recommended spares, 2 years operation (ordering kits listed below is recommended).

\*\* Idle Gear (79) and Drive Gear (80) and (154) are not sold separately.

### Kit Repair List:

Item No.	Description of Parts	Total Qty	Part Number
• 721	6 HP Motor Repair Kit (includes items 1, 7, 34, 45, 47, 53, 64, 70, 71, 74, 75, 77, 78, 82, 84, 90, 91, 157, 604, 607 and 612)	1	7650-0221
• 722	Brake Repair Kit (includes items 6, 7, 10, 64, 66, 67, 69 and 72)	1	7650-0223

# 6 HP MOTOR AND DISC BRAKE ASSEMBLY WITH EMERGENCY STOP ADAPTER DRAWING



(Dwg. MHP3205)



## 6 HP MOTOR AND DISC BRAKE ASSEMBLY WITH EMERGENCY STOP ADAPTER PARTS LIST

Item No.	Description of Parts	Total Qty	Part Number	Item No.	Description of Parts	Total Qty	Part Number
802	Motor Assembly (without Disc Brake)	1	contact factory	73	End Cover	1	9645-0044
• 1	Plug	1	6511-0441	74	Capscrew	4	4102-3001
• 6	'O' Ring	2	5823-5229	75	Washer	8	4520-1006
• 7	Gasket	2	9644-1048	76	Motor Housing	1	9644-0575
• 10	Retainer Ring	2	4770-0015	77	Check Valve	1	9579-0106
• 26	'O' Ring	1	5823-9329	78	Bearing	8	5016-0002
• 45	'O' Ring	4	5822-0129	79	Idle Gear **	Set	7644-1788
47	Ball	1	6940-1625	80	Drive Gear **		
51	Capscrew	4	4131-2206	82	Pin	4	4600-1116
• 53	'O' Ring	2	5820-9229	83	Motor Cover (for Emergency Stop Adapter)	1	9644-1023
60	Exhaust Pipe	2	9645-0031	86	Valve Assembly (includes 'O' Rings)	2	7645-0379
61	Brake Housing	1	9644-0574	90	Capscrew	5	4133-2406
62	Capscrew	2	4132-2306	• 91	Gasket	1	9644-1188
63	Piston	1	9644-1014	151	Gasket	1	9644-1503
• 64	'O' Ring	1	5823-5129	154	Drive Gear for Second Step **	Set	7644-1788
65	Splined Hub	1	9644-1013	155	Plug	2	9644-0725
66	Friction Plate	3	6302-8241	156	Setscrew	2	4200-7407
67	Drive Plate	5	6302-8341	• 157	'O' Ring	1	5823-9129
68	Brake Reaction Plate	1	9644-1015	• 191	'O' Ring	1	5821-1729
69	Spring	4	6916-5532	221	Spring Assembly	1	9645-0380
• 70	'O' Ring	4	5823-7429	222	Motor Cover	1	9644-1364
• 71	'O' Ring	1	5823-9529	606	Setscrew	3	4200-7407
72	Friction Plate with Spring Clips	3	9644-1552				

• Recommended spares, 2 years operation (ordering kits listed below is recommended).

\*\* Idle Gear (79) and Drive Gear (80) and (154) are not sold separately.

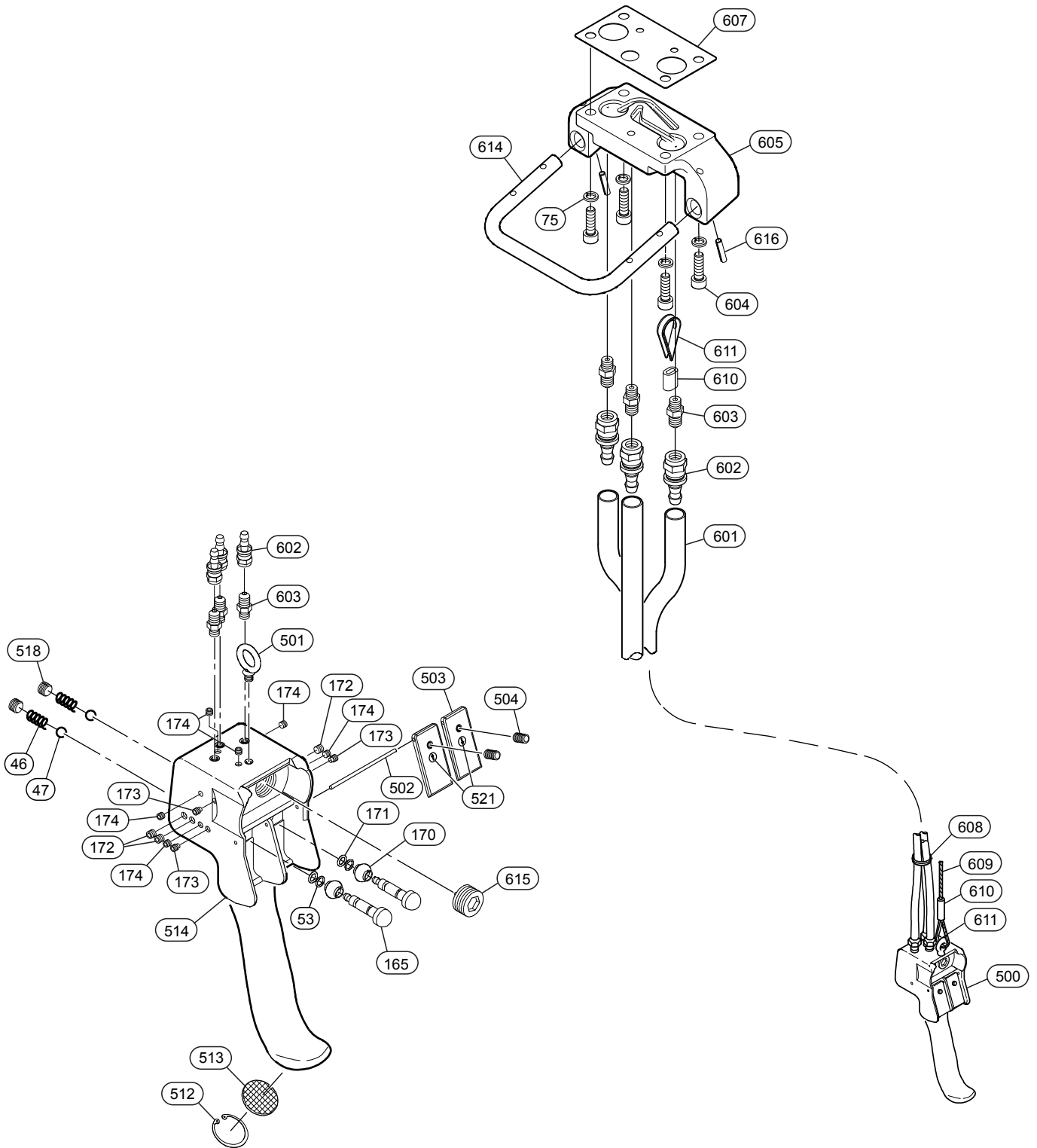
### Emergency Stop Adapter for Pendant Control Parts List:

Item No.	Description of Parts	Total Qty	Part Number	Item No.	Description of Parts	Total Qty	Part Number
47	Ball	1	6940-1625	• 196	Diaphragm	1	9644-1097
62	Capscrew	1	4130-1106	• 197	'O' Ring	1	5822-2329
• 70	'O' Ring	3	5823-7429	• 198	Plunger	1	9636-0017
102	Setscrew	1	4200-9207	199	Base Plate	1	9644-1095
103	Capscrew	7	4133-2306	• 201	'O' Ring	1	5823-7029
180	Nozzle	1	9644-1187	202	Cap	1	9644-1101
182	Plug	1	6512-8928	• 203	Seal	1	9617-0056
183	Emergency Stop End Cover	1	9644-1077	• 204	'O' Ring	2	5823-7129
186	Valve Seat	1	9644-1106	205	Valve Seat	1	9644-1098
• 187	'O' Ring	2	5820-5029	206	Washer	2	4570-1006
• 188	Axle	1	9644-1105	208	Washer	1	4560-1006
• 189	Seal	3	9644-1103	209	Sleeve	1	9644-1102
• 191	'O' Ring	1	5821-1729	• 210	Seal	1	9644-1104
192	Regulating Screw	1	9644-1096	211	Cap	1	9644-1100
193	Spring	1	6913-7041	• 212	Diaphragm	1	9644-1099
194	Stop Nut	1	4300-1111	213	Spring	1	6915-8732
195	Washer	1	4570-1004				

### Kit Repair List:

Item No.	Description of Parts	Total Qty	Part Number
• 722	Brake Repair Kit (includes items 6, 7, 10, 64, 66, 67, 69 and 72)	1	7650-0223
• 723	6 HP Motor For Emergency Stop Version Repair Kit (includes items 1, 7, 10, 34, 45, 47, 53, 64, 70, 71, 74, 75, 77, 78, 82, 84, 86, 87, 90, 91, 157, 186, 189, 191 — 193, 197, 201, 203, 204, 206, 212, 213, 604, 607 and 612)	1	7650-0222

**TWO FUNCTION PENDANT CONTROL ASSEMBLY WITHOUT EMERGENCY STOP PARTS DRAWING**



(Dwg. MHP3040)

## TWO FUNCTION PENDANT CONTROL ASSEMBLY WITHOUT EMERGENCY STOP PARTS LIST

Item No.	Description of Part	Total Qty	Part Number	Item No.	Description of Part	Total Qty	Part Number
500	Pendant Assembly	1	PHS2E-R	518	Plug	2	6510-7741
46	Spring	2	6912-8541	521	Label Kit	1	9579-0111
• 47	Ball	2	6940-1625	601	Hose **	As req'd	50923
• 53	'O' Ring	2	5820-9229	602	Fitting, Adapter	6	51029
• 75	Lockwasher	4	4520-1006	603	Fitting, Nipple	6	6823-7528
165	Valve	2	9579-0104	604	Capscrew	4	4132-2206
• 170	Protector	2	9579-0107	605	Adapter Plate	1	9644-0821
• 171	'O' Ring	2	5823-5329	• 607	Gasket	1	9644-0822
172	Setscrew	1	4200-7407	608	Hose Tie	1	6112-5132
173	Setscrew	2	4200-8207	609	Strain Relief Wire	As req'd	6976-3132
174	Setscrew	3	4200-8107	610	Sleeve Clamp	2	6112-5032
501	Lifting Eye	1	6422-2332	611	Thimble	2	6932-5332
502	Pin	1	9579-0040	614	Protector	1	9644-0829
503	Lever	2	9579-0122	615	Plug	1	6512-9541
504	Screw	2	4200-8607	616	Pin	2	4650-3420
512	Retainer Ring	1	4771-3030	---	Exhaust Valve Kit ***	As req'd	20417
513	Exhaust Washer	1	6760-0303	---	Label: "Read the Manual" ***	1	9618-0098
514	Pendant Handle	1	9579-0131	---	Label: "Do Not Use for Lifting Personnel" ***	1	9618-0100

- Recommended spares, 2 years operation (ordering kits listed below is recommended).

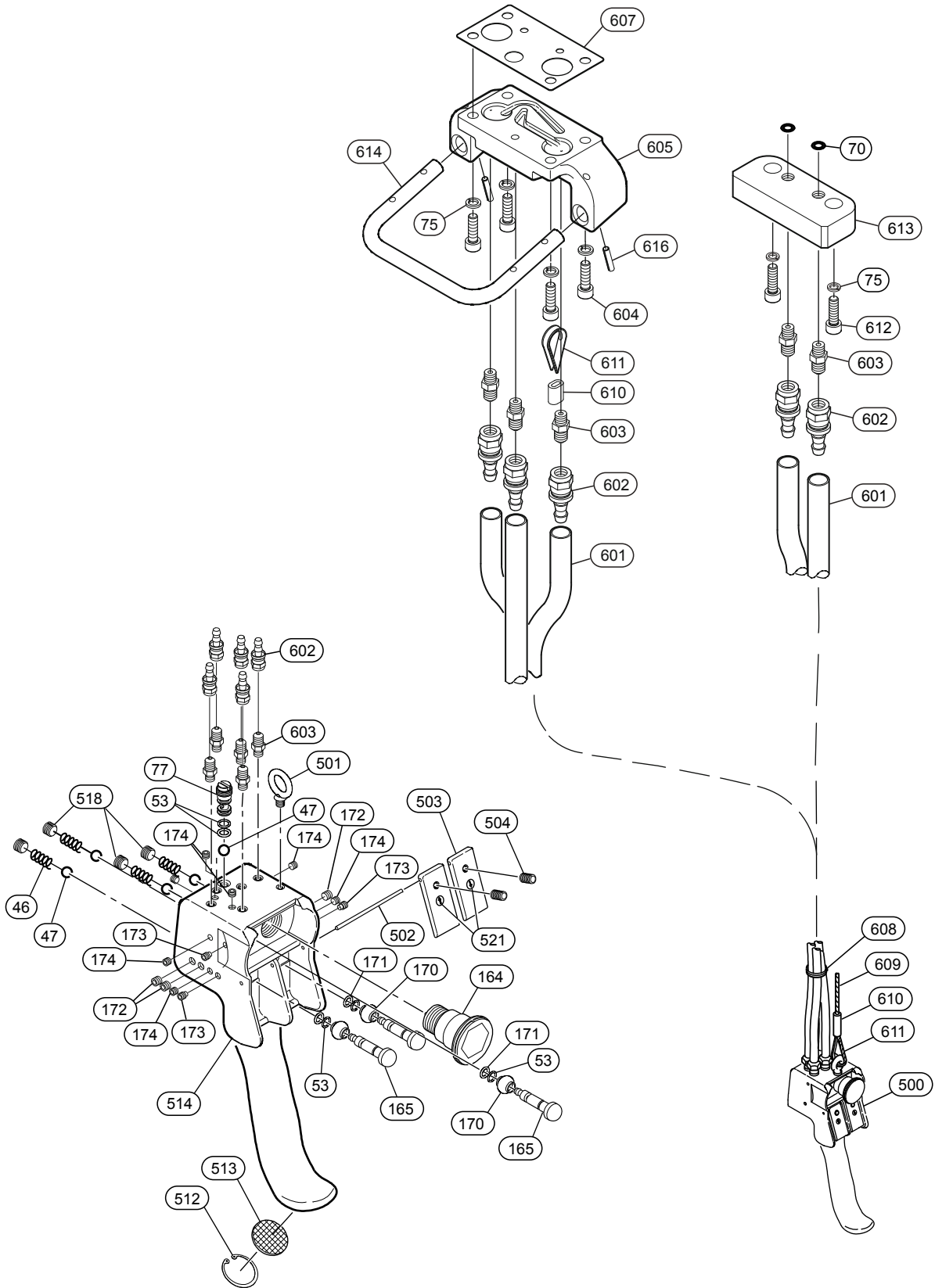
\*\* Required for hose lengths greater than 20 ft (6 m).  
 0 - 19 ft (0 - 6 m) Hose Length, 0 Exhaust Valve Kits Required.  
 20 - 39 ft (6 - 12 m) Hose Length, 2 Exhaust Valve Kits Required.  
 40 - 59 ft (12 -18 m) Hose Length, 4 Exhaust Valve Kits Required.

\*\*\* Not illustrated

### Kit Repair List:

Item No.	Description of Parts	Total Qty	Part Number
• 730	Pendant Repair Kit	1	7650-0141
• 732	Pendant Rebuild Kit (includes Pendant Repair Kit)	1	7650-0079

# TWO FUNCTION PENDANT CONTROL ASSEMBLY WITH EMERGENCY STOP DRAWING



(Dwg. MHP3039)

## TWO FUNCTION PENDANT CONTROL ASSEMBLY WITH EMERGENCY STOP PARTS LIST

Item No.	Description of Part	Total Qty	Part Number	Item No.	Description of Part	Total Qty	Part Number
500	Pendant Assembly	1	PHS2E-RU	514	Pendant Handle	1	9579-0130
46	Spring	4	6912-8541	518	Plug	4	6510-7741
• 47	Ball	5	6940-1625	521	Label Kit	1	9579-0111
• 53	'O' Ring	5	5820-9229	601	Hose **	As req'd	50923
• 70	'O' Ring	3	5823-7429	602	Fitting, Adapter	10	51029
• 75	Lockwasher	6	4520-1006	603	Fitting, Nipple	10	6823-7528
77	Check Valve	1	9579-0106	604	Capscrew	4	4132-2206
164	Valve, Emergency Stop	1	9579-0108	605	Adapter Plate	1	9644-0821
165	Valve	3	9579-0104	• 607	Gasket	1	9644-0822
• 170	Protector	3	9579-0107	608	Hose Tie	1	6112-5132
• 171	'O' Ring	3	5823-5329	609	Strain Relief Wire	As req'd	6976-3132
172	Setscrew	3	4200-7407	610	Sleeve Clamp	2	6112-5032
173	Setscrew	3	4200-8207	611	Thimble	2	6932-5332
174	Setscrew	8	4200-8107	612	Capscrew	2	4132-4306
327	Fitting	5	6165-2632	613	Adapter Plate (Emergency Stop)	1	9644-1173
501	Lifting Eye	1	6422-2332	614	Protector	1	9644-0829
502	Pin	1	9579-0040	616	Pin	2	4650-3420
503	Lever	2	9579-0122	- - -	Exhaust Valve Kit ***	As req'd	20417
504	Screw	2	4200-8607	- - -	Label: Read the Manual ***	1	9618-0098
512	Retainer Ring	1	4771-3030	- - -	Label: Do Not Use for Lifting Personnel ***	1	9618-0100
513	Exhaust Washer	1	6760-0303				

- Recommended spares, 2 years operation (ordering kits listed below is recommended).

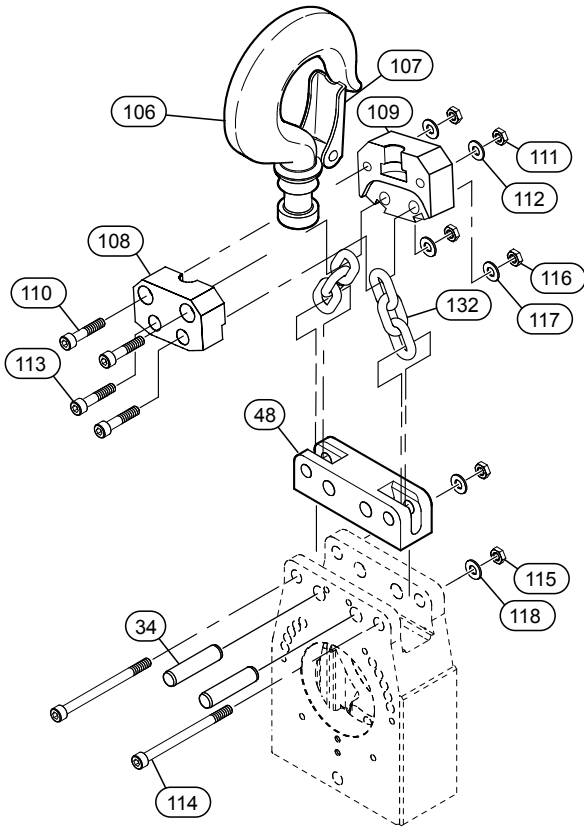
- \*\* Required for hose lengths greater than 20 ft (6 m).  
 0 - 19 ft (0 - 6 m) Hose Length, 0 Exhaust Valve Kits Required.  
 20 - 39 ft (6 - 12 m) Hose Length, 2 Exhaust Valve Kits Required.  
 40 - 59 ft (12 - 18 m) Hose Length, 4 Exhaust Valve Kits Required.
- \*\*\* Not illustrated

### Kit Repair List:

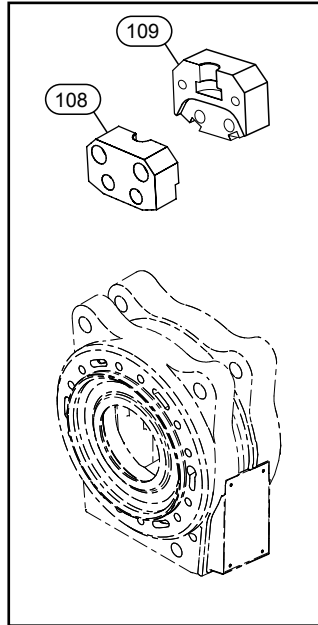
Item No.	Description of Parts	Total Qty	Part Number
• 733	Pendant Repair Kit	1	7650-0142
• 734	Pendant Rebuild Kit (includes Pendant Repair Kit)	1	7650-0080

## TOP HOOK ASSEMBLIES DRAWING AND PARTS LIST

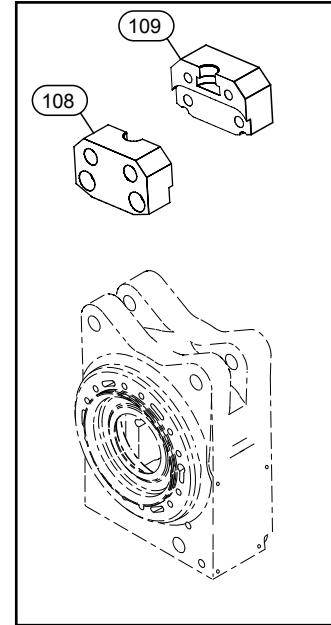
1.5 and 3 ton



4 and 8 ton



6 and 12 ton



**NOTE:** Top hooks are the same basic arrangement, refer to parts list for differing part numbers.  
Item 34 and 48 are not used in larger capacities.

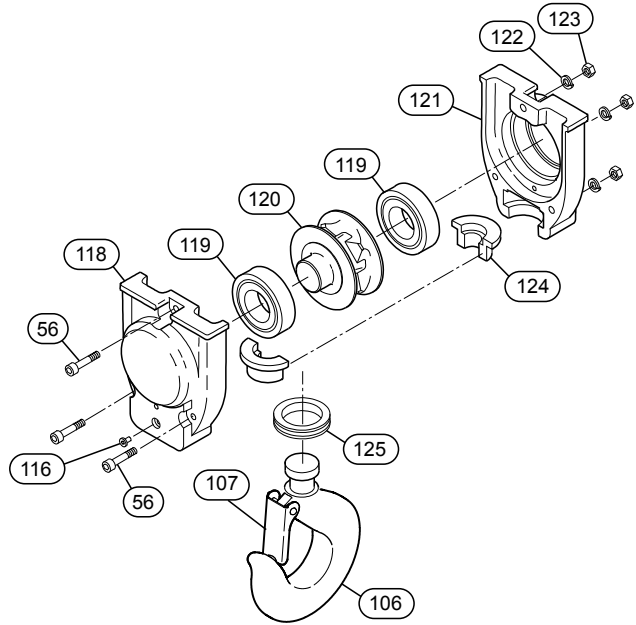
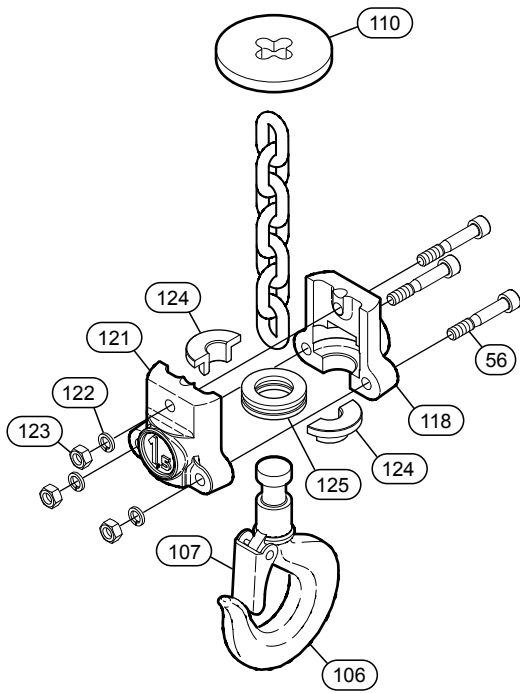
(Dwg. MHP3206)

Item No.	Description of Part	Total Qty	Part Number				
			1.5 and 3 ton	4 ton	8 ton	6 ton	12 ton
34	Pin	2	9644-3245			---	
48	Support	1	9644-3289			---	
106	Top Hook Assembly (includes item 107)	1	9412-8125	9645-0277	9645-0180	9645-0279	9645-0278
107	Hook Latch Kit	1	contact factory				
108	Hook Support Half	2	9424-0081	9645-0376		9645-0280	
109	Hook Support Half	1		9645-0317		---	
110	Capscrew	2	---	4133-0106			
111	Locknut	2	---	4300-5811			
112	Washer	2	---	4520-1014			
113	Capscrew	2	4132-6406	4132-3706		9526-0037	
114	Capscrew	4	4132-9406	4131-9306		4132-3906	
115	Locknut	2	75583M	4300-6011		4300-4011	
116	Locknut	2	4300-3511	4300-6011		4300-0811	
117	Washer	2	4520-1008	4520-1016		4520-1020	
118	Washer	2	---	4520-1016		4520-1020	
132	Chain	*	9424-0221	9412-0278		9526-0077	

# 1.5 AND 3 TON BOTTOM BLOCK ASSEMBLY DRAWING AND PARTS LIST

1.5 t Single Fall Capacity

3t Double Fall Capacity



(Dwg. MHP3203)

**Single Fall Hoist**

Item No.	Description of Part	Total Qty	Part Number	
			1.5 t Single	
			Standard	Option T1
---	Bottom Block Assembly	1	7644-3237	7644-3301
56	Capscrew	3	4132-6406	
106	Hook	1	9644-0779	9644-0919
107	Hook Latch Kit	1	9424-0364	
110	Limit Stop Washer	1	9644-3150	
118	Half Hook Block	1	9412-0729	9412-0731
121	Half Hook Block	1	9644-3934	9412-0732
122	Lockwasher	3	4520-1008	
123	Nut	3	4300-3511	
124	Ring (2 piece)	1	9644-0778	
125	Thrust Bearing	1	540-0005	

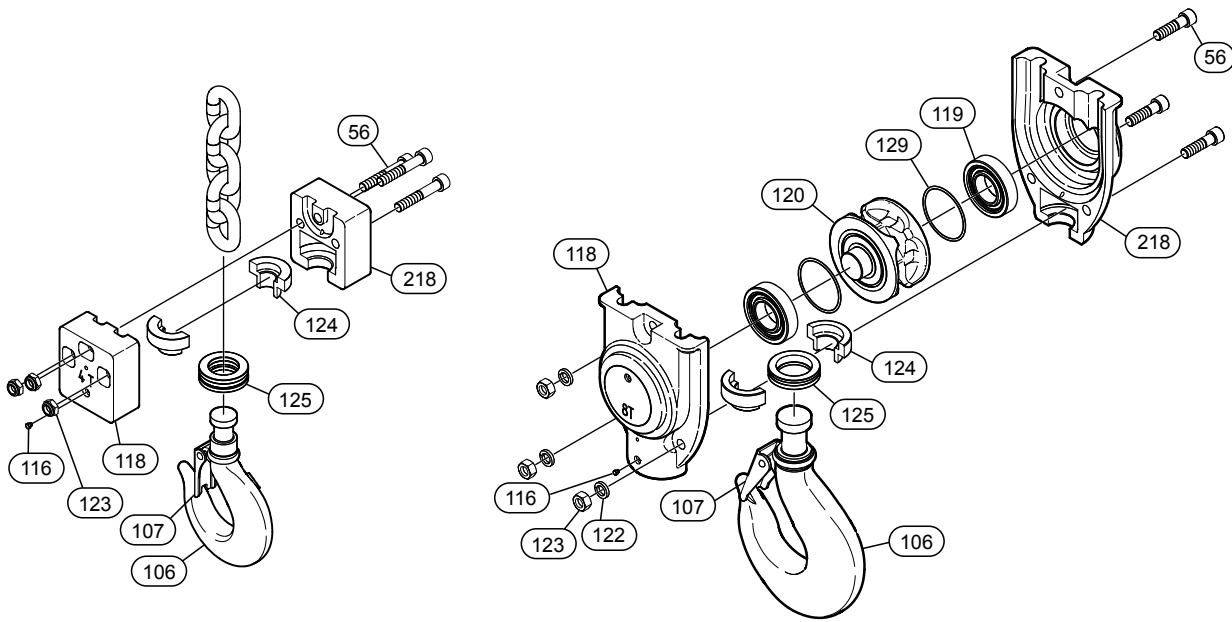
**Double Fall Hoist**

Item No.	Description of Part	Total Qty	Part Number	
			3 t Double	
			Standard	Option T1
---	Bottom Block Assembly	1	7424-0111	7424-0455
56	Capscrew	3	4132-6706	
106	Hook	1	9424-8357	9424-8390
107	Hook Latch	1	9424-0365	
116	Grease Fitting	1	6710-2627	
118	Half Hook Block	1	9424-0289	9424-0388
119	Bearing	2	5025-0005	
120	Sprocket	1	9424-0056	
121	Half Hook Block	1	9424-0288	9424-0387
122	Lockwasher	3	4520-1008	
123	Nut	3	4300-3511	
124	Ring, (2 piece)	1	9424-7291	
125	Thrust Bearing	1	5400-0006	

## 4, 6, 8 AND 12 TON BOTTOM BLOCK ASSEMBLY DRAWING AND PARTS LIST

4 and 6 t Single Fall Capacities

8 and 12 t Double Fall Capacities



(Dwg. MHP3006)

### Single Fall Hoist

Item No.	Description of Part	Total Qty	Part Number			
			4 T Single		6 T Single	
			Standard	Option T1	Standard	Option T1
---	Bottom Block Assembly	1	7645-0118	7645-0315	7526-0100	7526-7245
56	Capscrew	( )	4132-3306 (3)		9526-0037 (1)	
106	Hook	1	9645-0120	9645-0249	9412-8459	9412-8458
107	Hook Latch Kit	1	9424-0365		9412-0460	
116	Greaser	1	6710-2627			
118	Half Hook Block	1	9645-0117	9645-0252	9526-0138	9526-8246
123	Nut	( )	75583M (3)		4300-6911 (2)	
124	Ring, (2 Piece)	1	9645-0115		9412-7398	
125	Thrust Bearing	1	5400-0106		5470-0007	
218	Half Hook Block	1	9645-0116	9645-0251	9526-0139	9526-8247

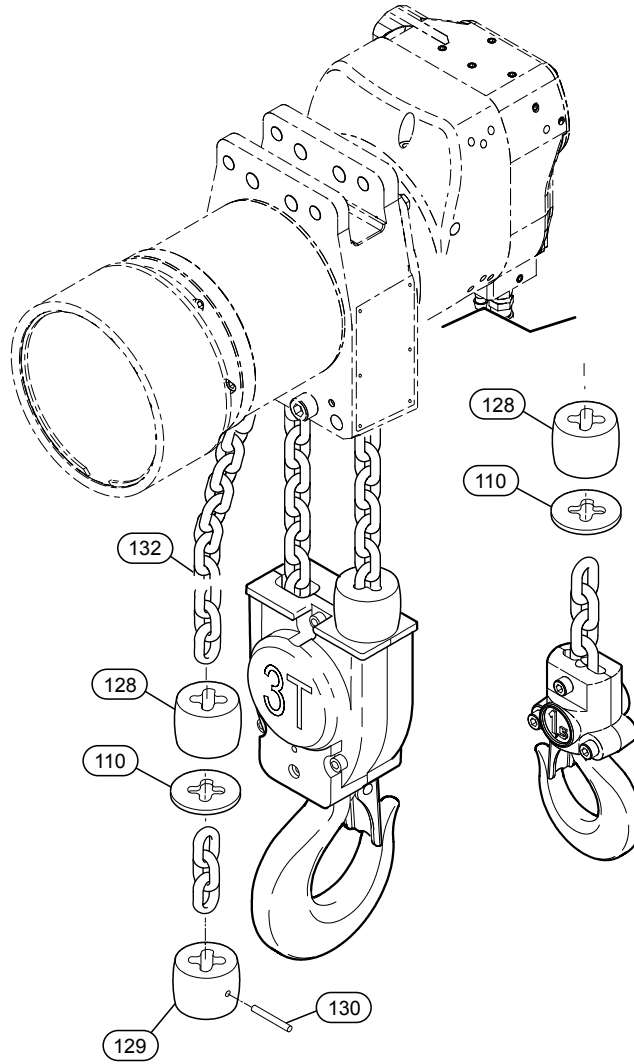
### Double Fall Hoist

Item No.	Description of Part	Total Qty	Part Number			
			8 T Double		12 T Double	
			Standard	Option T1	Standard	Option T1
---	Bottom Block Assembly	1	7645-0123	7645-0314	7526-0356	7526-7248
56	Capscrew	3	4132-4406		4131-0306	
106	Hook	1	9645-0124	9645-0250	9645-0278	9645-0393
107	Hook Latch Kit	1	9645-0316		9623-0236	
116	Greaser	1	6710-2627			
118	Half Hook Block	2	9645-0125	9645-0253	9526-0352	9645-0392
119	Bearing	2	5120-0007		5120-0009	
120	Sprocket	1	9645-0127		9590-8069	
123	Nut	3	4300-3611			
124	Ring, (2 Piece)	1	9645-0126		9623-7014	
125	Thrust Bearing	1	5470-0041		5470-0013	
• 129	'O' Ring	2	5822-8029		5823-2329	
218	Half Hook Block	1	9645-0159	5821-0429	9526-0364	9526-7204

• Recommended spares, 2 years normal operation.



## BOTTOM HOOK ACCESSORIES PARTS DRAWING AND PARTS LIST

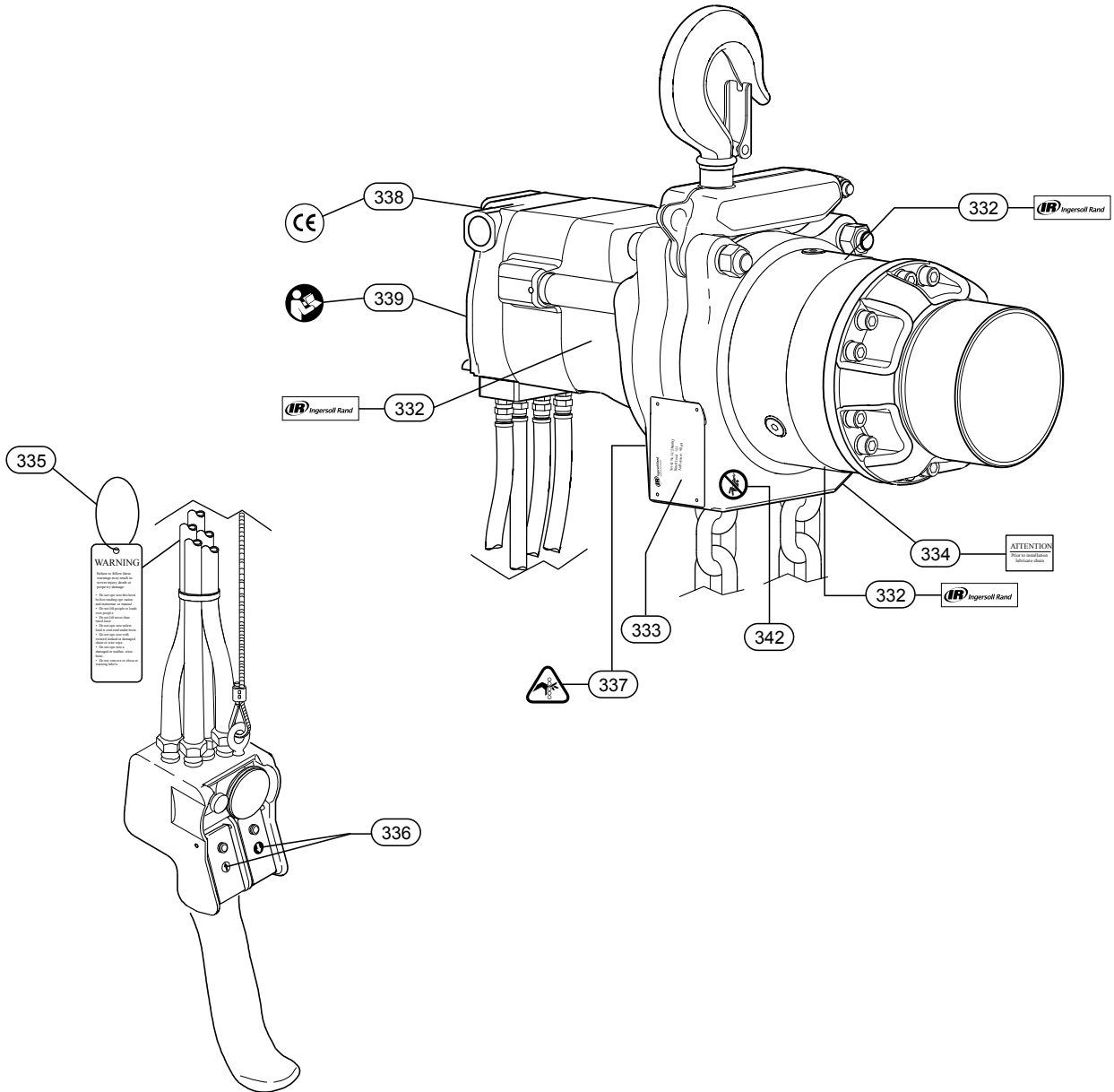


(Dwg. MHP1431)

Item No.	Description of Part	Total Qty	Part Number					
			LC2A015S	LC2A030D	LC2A040S	LC2A080D	LC2A060S	
			1.5 ton	3 ton	4 ton	8 ton	6 ton	12 ton
110	Washer	1	9424-0177		9412-0118		9526-0060	
128	Buffer	1	9424-0070		9412-0141		9526-0039	
129	End Buffer	1	9424-0105		9412-0150		9526-0038	
130	Pin	1	4650-2820		4650-2920		4650-4020	
132	Load Chain (Bulk)	Specify Length (meters)	LC824-G8ZP		LC1336-G8ZP		LC1645-G8ZP	

**Note:** Quantities above will vary depending upon single or dual hook arrangement.

## LABEL AND TAG PLACEMENT ASSEMBLY DRAWING AND PARTS LIST



(Dwg. MHP3081)

Item No.	Description of Part	Total Quantity	Part Number
† 330	CE Label Kit (includes 332-339 and 342)	1	7424-0370
† 331	Label Kit (includes 332-337, 339 and 342)	1	7412-0461
332	Ingersoll Rand Logo	3	See kit list
333	Data (Name) Plate	1	
334	Notice (Lubricate Chain) Label	1	
335	Warning Tag	1	
336	Pendant Label Kit	1	
337	Pinch Hazard Symbol Label	1	
338	CE Label	1	
339	Read Literature Symbol Label	1	
342	Non-Manrider Symbol Label	1	

† Items not illustrated.

---

**SERVICE NOTES**

---

