



UNITEC

NEW CHEETAH SAW

High-Performance Power Tools & Accessories

NEW-AND-IMPROVED RECIPROCATING SAW

The CHEETAH Saw has the same reliability as the CAT Saw but with significant increases to power, speed, & efficiency.

Key Features

- 21% increased motor power
- 35% faster speed, 0-2300 RPM
- 60% faster blade changeout
- Heat reduction
- Higher efficiency

**UP TO 92%
FASTER
CUTTING THAN
COMPETITOR
MODELS**

ATEX Certified



Model No.	5 1217 0020
Motor Power	1.7 HP
Stroke Length	1-1/8"
Strokes per Minute	0-2300
Weight	9.9 lbs.
Length	18-1/2"
Air Consumption	51 CFM
Air Pressure	90 PSI
Air Connection	1/2" NPT (ID)

Quick-change chuck fits standard single tang blades



Quick Connect Blade Holder

Up to 60% faster blade changeout than previous models. Easier user handling for increased safety & productivity!



Accessories:

Clamp:

P/N 5 1217 9910 - Adjust the height from the workpiece (also works for other reciprocating saws) up to 6" pipe

Blades:

Metal 1/8" & Thicker

Mega Sharp: 6" 007/150, 8" 007/200, 12" 007/280,

General Purpose: 6" 3013/150, 8" 3013/200, 12" 3018/280

Metal up to 1/8" Thick

Mega Sharp: 6" 006/150, 7" 006/250

General Purpose: 3-5/8" 3017/90, 6" 3014/150

Blades for Plastic, Wood, & More available.

Retrofit Kits Available:

P/N 5 1216 7920 Retrofit Kit available for CheetaH to convert new quick-change chuck to allen bolt chuck

P/N 5 1217 9300 Quick-change chuck for outgoing CAT saw

Air • Hydraulic • Electric

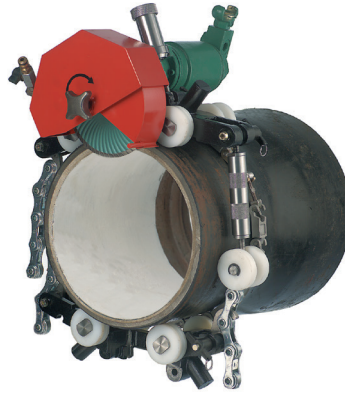
Fast, accurate cutting on the job site!

Our saws can be used as handheld tools or with an assortment of clamps for pipe & other materials. Our complete saw line includes pneumatic, electric, & hydraulic power tools, saw blades, & accessories.



Portable Power Hacksaws

- Pneumatic, electric, & hydraulic power
- Cut pipe up to 30" OD in one pass
- Motors come with variable speeds
- Designed for the toughest service in refineries, chemical plants, utilities, pipelines, construction, offshore oil, & demolition applications.



Pipe Cutting Machines

- Pneumatic & hydraulic power
- Cut pipe up to 96" dia. with wall thickness up to 2"
- Ideal for use in water utilities, pipe line construction, marine, petrochem, power generation, & demolition applications.



Nibblers

- Electric powered
- Easily cut sheet metal & steel up to 3/8" thick
- Head can be rotated to four 90° positions



Portable Reciprocating Saws

- Pneumatic, hydraulic, & electric power
- Cut pipe & channel up to 6" dia., cut plastic up to 8" dia.
- Top cutting performance in tough environments



Portable Band Saws

- Pneumatic, electric, & hydraulic power
- 4-3/4" up to 9" O.D. cutting capacity- largest in the industry
- Ideal for cutting steel in refineries, chemical plants, utilities, pipelines, construction, offshore oil, & demolition applications

Distributed By: