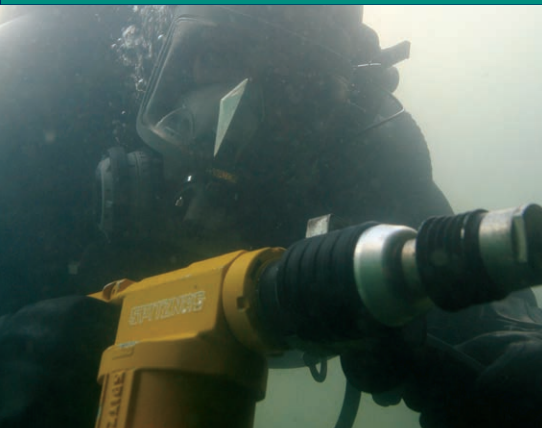


Specialty Tools

for Subsea, Ex Zones, Mining, Demolition and more



Metal • Wood • Plastic • Concrete

Pipe Cutting Saws

Diamond Core Drills

Chain Saws

Rotary Hammer Drills

Portable Band Saws

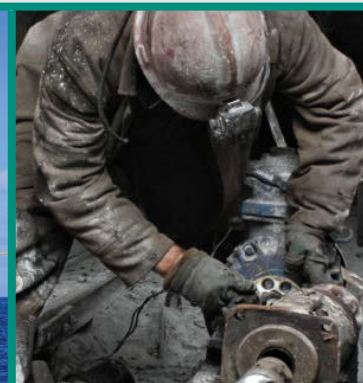
Grinders

Hacksaws

Dry-Cut Circular Saws

Magnetic Drills

Impact Wrenches



Underwater and Specialty Tools - Hydraulic & Air

Ideal for Industrial, Subsea, Mining, Utility, Demolition and Construction applications, including Ex Zones and Hazardous Environments

Air Chain Saws for Hazardous Atmospheres and Wet Environments

Chain brake for operator safety

- Pneumatic power for use in hazardous atmospheres and wet environments, including underwater applications
- Chain brake for stopping chain movement during kickback or repositioning of saw during cutting
- Powerful 4 HP motor at 90 PSI air pressure, 92 CFM
- Low maintenance and easy startup – saw chain and motor are automatically oiled by two separate lubricating systems
- .404 pitch Super Chisel saw chain is standard
- Optional carbide-tipped and ripping chain available



Pipe clamp for straight cutting of HDPE and plastic pipe. For use with 5 1027 series. P/N 5 1027 9100



Series 5 1026, 5 1027, 5 1028 and 5 1029 Pneumatic chain saw with brake

11", 17", 21" and 25" cutting capacity options

Model No.	Power	Cutting Capacity	Length with Bar	Weight	Air Connection	Hose ID
For Underwater Use, with brake - depths up to 33 ft. (10 meters)						
5 1028 0010	4 HP, 90 PSI @ 92 CFM	17"	33"	25 lbs.	3/4" NPT (ID)	5/8"
5 1028 0020	4 HP, 90 PSI @ 92 CFM	21"	37"	28 lbs.	3/4" NPT (ID)	5/8"
5 1028 0040	4 HP, 90 PSI @ 92 CFM	25"	41"	31 lbs.	3/4" NPT (ID)	5/8"
For Cutting Plastic, with brake and water feed system						
5 1027 0010	4 HP, 90 PSI @ 92 CFM	17"	33"	25 lbs.	3/4" NPT (ID)	5/8"
5 1027 0020	4 HP, 90 PSI @ 92 CFM	21"	37"	28 lbs.	3/4" NPT (ID)	5/8"
5 1027 0040	4 HP, 90 PSI @ 92 CFM	25"	41"	31 lbs.	3/4" NPT (ID)	5/8"
5 1027 9100	Pipe clamp for straight cutting of plastic					
For Cutting Wood, with brake						
5 1026 0010	4 HP, 90 PSI @ 92 CFM	17"	33"	25 lbs.	3/4" NPT (ID)	5/8"
5 1026 0020	4 HP, 90 PSI @ 92 CFM	21"	37"	28 lbs.	3/4" NPT (ID)	5/8"
5 1026 0040	4 HP, 90 PSI @ 92 CFM	25"	41"	31 lbs.	3/4" NPT (ID)	5/8"
For Underground/Coal Mining Use, with brake						
5 1029 0010	4 HP, 90 PSI @ 92 CFM	17"	33"	25 lbs.	3/4" NPT (ID)	5/8"
5 1029 0020	4 HP, 90 PSI @ 92 CFM	21"	37"	28 lbs.	3/4" NPT (ID)	5/8"
5 1029 0040	4 HP, 90 PSI @ 92 CFM	25"	41"	31 lbs.	3/4" NPT (ID)	5/8"

*Optional 11" bar available on special order, part no. 5 1005 7160. Contact CS Unitec for more information.

Utility Pneumatic Chain Saw

- Ideal all-purpose air chain saw – compact, lightweight and powerful
- Only 5.4 lbs., 10" capacity
- Ideal for utilities, mines, construction and agriculture

Model 5 1005 0010

Power	1.2 HP, 90 PSI @ 30 CFM
Cutting Capacity	10"
Length	21"
Weight	5.4 lbs.
Air Connection	1/4" NPT (ID)

Model 5 1005 0010
10" cutting capacity
Includes built-in
chain oiler and
chain brake



Caution: User must follow all appropriate safety regulations when choosing a tool for their particular working environment.

Underwater and Specialty Tools - Hydraulic & Air

Air Chain Saws for Hazardous Atmospheres and Wet Environments

Low maintenance and easy startup

- Pneumatic power for use in hazardous atmospheres and wet environments, including underwater applications
- Chain guard to protect operator
- Powerful 4 HP motor at 90 PSI air pressure, 92 CFM
- Saw chain and motor are automatically oiled by two separate lubricating systems
- .404 pitch Super Chisel saw chain is standard
- Optional carbide-tipped and ripping chain available



Series 5 1008:
Underwater chain saw
with exhaust valve



Air Tool Line Conditioner for underwater air tools to displace moisture. Developed to inhibit rust and corrosion of air motors. 1 quart/liter, order part number MS 9105.



Model No.	Power	Cutting Capacity	Length with Bar	Weight	Air Connection	Hose ID
For Underwater Use*						
5 1008 0030	4 HP, 90 PSI @ 92 CFM	21"	37"	29 lbs.	3/4" NPT (ID)	5/8"
5 1008 0040	4 HP, 90 PSI @ 92 CFM	25"	41"	31 lbs.	3/4" NPT (ID)	5/8"
For General Use						
5 1007 0003	4 HP, 90 PSI @ 92 CFM	15"	29"	22 lbs.	3/4" NPT (ID)	5/8"
5 1007 0010	4 HP, 90 PSI @ 92 CFM	17"	33"	25 lbs.	3/4" NPT (ID)	5/8"
5 1007 0020	4 HP, 90 PSI @ 92 CFM	21"	37"	28 lbs.	3/4" NPT (ID)	5/8"
5 1007 0040	4 HP, 90 PSI @ 92 CFM	25"	41"	31 lbs.	3/4" NPT (ID)	5/8"

Carbide-Tipped Saw Chain

- More cutting efficiency with less down time – stays sharp 25x longer and lasts 10x longer than regular-life saw chains
- Efficiently cuts tough materials, including plastics, railroad ties, utility poles, hardwoods and soft masonry materials
- Withstands severe cutting conditions that include sand, mud, salvage work, etc.
- Easily resharpened
- Available in 10", 15", 17", 21" and 25" lengths



Close-up of Carbide-tipped Chain

Also available: Super Chisel and Ripping saw chain in 10", 15", 17", 21" and 25" lengths

Guide Bars for wood and plastics also available. Contact CS Unitec for more information.



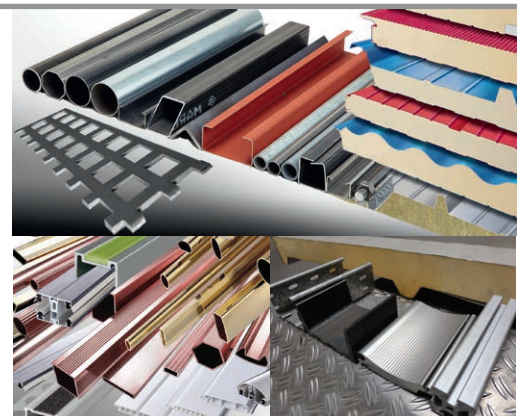
Also Available:



Hydraulic Pistol Grip and Pole Saws



Hydraulic and Pneumatic Circular Saws up to 12-5/8" dia.



Caution: User must follow all appropriate safety regulations when choosing a tool for their particular working environment.

Underwater and Specialty Tools - Hydraulic & Air

Ideal for Industrial, Subsea, Mining, Utility, Demolition and Construction applications, including Ex Zones and Hazardous Environments

Hydraulic Chain Saw with Brake

Ideal for underwater applications



- Hydraulic power for safe use in wet environments and underwater applications
- Chain brake for stopping chain movement during kickback
- Open center hydraulic system with integrated pressure control
- Powerful 10 HP motor operates at 12 GPM at 2000 PSI
- Standard with .404 pitch Super Chisel saw chain
- Optional carbide-tipped saw chain available



Model No.	Power	Cutting Capacity	No-Load Speed	Hose ID
5 1030 0002	10 HP, 12 GPM @ 2000 PSI	11"	5000 RPM	5/8"
5 1030 0300	10 HP, 12 GPM @ 2000 PSI	15"	5000 RPM	5/8"
5 1030 0010 N	10 HP, 12 GPM @ 2000 PSI	17"	5000 RPM	5/8"
5 1030 0020	10 HP, 12 GPM @ 2000 PSI	21"	5000 RPM	5/8"
5 1030 0040	10 HP, 12 GPM @ 2000 PSI	25"	5000 RPM	5/8"
5 1030 0060	10 HP, 12 GPM @ 2000 PSI	28"	5000 RPM	5/8"
5 1030 0070	10 HP, 12 GPM @ 2000 PSI	40"	5000 RPM	5/8"

* Includes whip hose with 1/2" FF couplings



Optional Splash Guard
P/N 5 1030 9100

Clamp for cutting up
to 27" pipe
P/N 5 1030 9300



Reciprocating Saws

Ideal for cutting structural steel, tanks, bolts, pipes, plastic and more



Pneumatic

Visit www.csunitec.com for saw blades and accessories



Hydraulic

Model 5 1217 0020 - The CAT	
Motor Power	1.3 HP, 46 CFM @ 90 PSI
Stroke Length	1-1/8"
Strokes per Min.	0-1800
Weight	9 lbs.
Length	16"
Air Connection	1/2" NPT (ID)
Saw Kit	Order Model 5 1217 0070

Model 5 1219 0010 - The SHARK	
Motor Power	2 HP
Oil Pressure	6 GPM (up to 13) @ 2000 PSI
Strokes per Min.	1700
Length/Weight	18" / 13.2 lbs.
Hydraulic Connection	M 18 x 1.5 Female
Hose ID	1/2" ID with 1/2" FF Couplings
Saw Kit	5 1219 0070

Hydraulic Hacksaw

Cut pipe up to 30" OD in one pass

- Ideal for cutting pipes, tanks, structural steel, profiles and other materials
- 2-3/8" stroke for heavy-duty cutting



Model 5 1220 0050	
Motor Power	3.8 HP
Oil Pressure	4 GPM @ 2000 PSI
Strokes per Min.	100-500
Weight	13.5 lbs.
Hydraulic Connection	M 18 x 1.5 Female
Hose ID	1/2" ID with 1/2" FF Couplings

Caution: User must follow all appropriate safety regulations when choosing a tool for their particular working environment.

Underwater and Specialty Tools - Hydraulic & Air

Pipe Cutting Machines - Cut pipe up to 63" dia.



ATEX Certified

Air and hydraulic models – ideal for use in municipal water and gas utilities, petrochemical, power generation, plant maintenance, pipe line construction, marine and demolition applications.

- Use on steel, ductile iron, nonferrous metal, HDPE, plastic, concrete pipe and more
- Cut pipe underground with minimal excavation
- Machine is manually guided with hand lever feed to make a 360° cut in pipe at 90°
- Guide chain is adjustable by adding and removing chain links
- ATEX certified for use in Ex Zones (ATEX II 2 GcT6)



*Hydraulic Model
No. 5 8006 7000*



*Pneumatic Model
No. 5 8010 0050*

Features include:

- Quickly cut pipe from 6" to 63" dia. with wall thicknesses from 1/4" to 2"
- 7" blade with adjustable cutting depth and fully enclosed blade guard
- Fully enclosed blade guard
- Cooling water connection
- Carbide-tipped or diamond-coated blades

Visit www.csunitec.com for saw blades and accessories



When ordering, specify pipe diameter and application for assistance with determining required blade, feed handle, guide carriage & chain and tensioning chain & tensioner.

Model No.	Motor Specifications	Blade Arbor	Speed (RPM)	Blade Dia.	Hose Connection	Weight
Pneumatic Motor						
5 8002 7000	2.4 HP, 77 CFM @ 90 PSI	7/8"	350/1800	7"	1/2" NPT	28 lbs.
5 8010 0050	4 HP, 106 CFM @ 90 PSI	7/8"	1800	7"	3/4" NPT	28 lbs.
Hydraulic Motor						
5 8006 7000	4 HP, 6-13 GPM @ 2000 PSI	7/8"	350/1800	7"	1/2" FF (HTMA)	28 lbs.

Portable Band Saws - Pneumatic and Hydraulic

Cold cutting saws for industry, including refineries, chemical plants, utilities, construction, offshore oil, mining, marine and demolition

- Fast, deep, cold cutting of pipe, conduit, bolts, cable, angle iron, structural steel, chain and more
- Cut steel, stainless steel, Inconel, chrome, Hastelloy, aluminum, copper, iron, fiberglass, plastics, wood and more
- Vise clamps available for straight cutting of round, square and angular materials



Pneumatic Band Saws

Model No.	Cutting Capacity	Motor Power	Blade Speed (ft/sec)	Wt. (lbs.)
Standard AirBand™ – Aluminum Housing; 1/4" NPT ID Air Connection; 3/8" Air Hose				
5 6003 0011	4 ³ / ₄ " OD / 4 ¹ / ₂ " x 4 ³ / ₄ "	90 PSI @ 20 CFM	2.2-3.3 (var.)	14
5 6093 0010	4" OD / 4" x 4"	90 PSI @ 19 CFM	5.75	17*
Deep Throat™ AirBand – Stainless Steel housing; 1/2" NPT ID Air Connection; 1/2" Air Hose				
5 6031 0010 N	7" OD / 7" x 7"	90 PSI @ 43 CFM	4.0-4.9 (var.)	28
Wide Mouth™ AirBand – Stainless Steel housing; 1/2" NPT ID Air Connection; 1/2" Air Hose				
5 6062 0010	8" OD / 9" x 8 ¹ / ₂ "	90 PSI @ 43 CFM	4.0-4.9 (var.)	35

* Weight of saw only. Weight of saw, stationary cutting table and vise is 48 lbs.

Hydraulic Band Saws

1.6 HP; Oil Flow: 4 GPM @ 2000 PSI; 1/2" FF (HTMA) Couplings

Model No.	Cutting Capacity	Blade Speed	Wt. (lbs.)
Standard – Stainless Steel housing			
5 6043 0010	4" OD / 4" x 4"	4.2 ft./sec.	23
Deep Throat™ – Stainless Steel housing			
5 6041 0010	7" OD / 7" x 7"	4.2 ft./sec.	28
Wide Mouth™ – Stainless Steel housing			
5 6054 0010	8"OD / 9" x 8 ¹ / ₂ "	4.2 ft./sec.	35.6

Caution: User must follow all appropriate safety regulations when choosing a tool for their particular working environment.

Underwater and Specialty Tools - Hydraulic & Air

Ideal for Industrial, Subsea, Mining, Utility, Demolition and Construction applications, including Ex Zones and Hazardous Environments

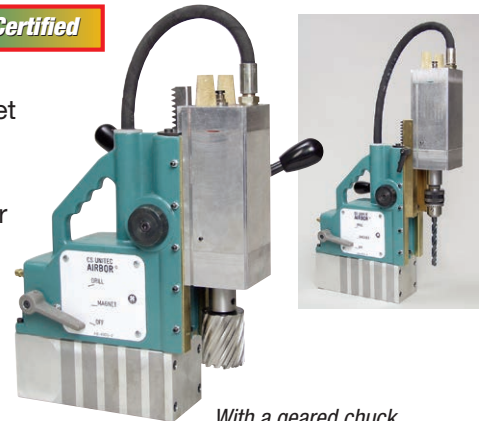
Portable Magnetic Drills – Pneumatic

Holes up to 2-1/16" dia.

- Inherently safer than electromagnetic drills in hazardous atmospheres and wet environments where electricity requires "hot work permits"
- Industry's first completely air-operated magnetic drill –NO ELECTRICITY!
- Fail-safe permanent magnetic is activated "on" and "off" by air pressure; if air flow is lost, the magnet will not disengage
- Long drill stroke –up to 10-1/4"
- Pressurized coolant system lubricates cutter and reduces risk of sparking



ATEX Certified



With a geared chuck adapter (Part No. IBC 18) and extra rack (Model No. AB-4300-2R), AIRBOR™ easily converts to a standard drill press with a 7 1/2" stroke.

Model AB-4300-2 / AB-4300-2R Specifications

Motor Power	1.6 HP, 64 CFM @ 90 PSI
Hole Capacity	2 1/16" dia.
No Load Speed	400 RPM
Magnetic Force (1" plate)	1600 lbs.
Arbor Bore	3/4" Weldon Shank
Automatic Lubrication	Included

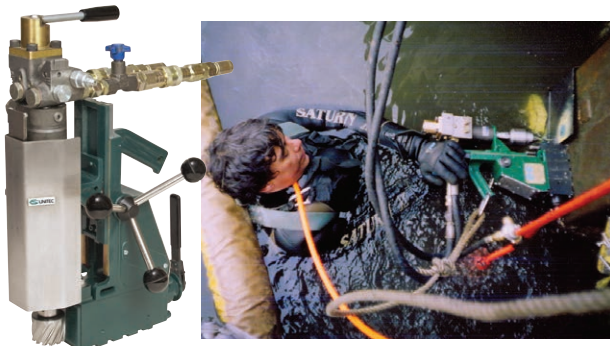
Drill with 4-7/8" stroke:
Order Model **AB-4300-2**

Drill with 10-1/4" stroke:
Order Model **AB-4300-2R**

Portable Magnetic Drills – Hydraulic

Holes up to 4" dia., tap up to 1" dia.

- Hydraulic motor safe for underwater use
- Ideal for industrial, construction, marine and mining applications
- Drill structural steel and other metals
- Manually operated permanent magnet with ratchet control



Model HB 4400

Motor Power	1.5 HP, 4.5 GPM @ 2000 PSI
Hole Capacity	2 1/16" dia.
No Load Speed, var.	0-630 RPM
Magnetic Force (1" plate)	1300 lbs.
Arbor Bore	3/4" Weldon Shank
Automatic Lubrication	Included



Visit www.csunitec.com for annular cutters and accessories



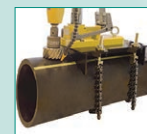
ATEX Certified

Model 2 1345 0010

Motor Power	3.4 HP, 4.3 GPM @ 2000 PSI
Hole Capacity	4" dia.
Tapping Capacity	1" dia.
No Load Speed, var.	0-630 RPM
Magnetic Force (1" plate)	1300 lbs.
Arbor Bore	3/4" Weldon Shank
Automatic Lubrication	Included

Pipe Clamp – Model 2 1330 8500

Optional clamp allows right angle drilling of steel, cast iron, cement and plastic pipes up to 19-1/2" dia.



Extension chains available for pipes up to 43-1/4" dia.
P/N 5 1201 9030* – For pipes up to 31-1/2" (800mm)
P/N 5 1201 9020* – For pipes up to 43-1/4" (1100mm)
* 2 pieces needed for one clamp

Caution: User must follow all appropriate safety regulations when choosing a tool for their particular working environment.

Underwater and Specialty Tools - Hydraulic & Air

Rotary Hammer Drills – Pneumatic and Hydraulic

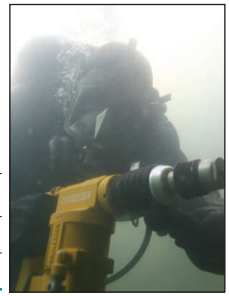
Powerful percussion drilling for concrete and masonry

ATEX

- SDS Plus or SDS Max models
- Safety clutch protects against overloading and jamming
- Hammer drill holes in concrete, brick and masonry
- Rotary drilling mode for straight drilling of steel and wood
- Open center hydraulic standard, closed center optional



1/2" chuck with SDS+ shank: Part No. 2 2409 8999
 1/2" chuck with SDS Max shank: Part No. XRDCMKL 12



Pneumatic Hammer Drill Model No.	Blows/Minute (BPM)	Drill Speed (RPM)	Solid Bit Capacity (concrete)	Core Bit Capacity (concrete)	Twist Drill (wood)	Motor Power (HP)	CFM at 90 PSI	Tool System	Weight (lbs.)
2 1266 0010*	0-2000	0-950	1/2" dia.	1" dia.	3/8" dia.	0.75	21	1/2" Chuck	7
2 2404 0030*	0-3000	0-625	1" dia.	3" dia.	3/4" dia.	0.70	21	SDS Plus	11
2 2417 0010*	0-2500	0-250	2" dia.	6" dia.	1 1/4" dia.	1.60	53	SDS Max	26

* Optional underwater air tool line conditioner to displace moisture, Part No. MS 9105.

Hydraulic Hammer Drill Model No.	Blows/Minute (BPM)	Drill Speed (RPM)	Solid Bit Capacity (concrete)	Core Bit Capacity (concrete)	Twist Drill (wood)	Motor Power (HP)	Oil Flow/@ 1160 PSI	Tool System	Weight (lbs.)
2 2426 0010**	0-3400	0-625	1" dia.	3" dia.	3/4" dia.	0.8	5.8-13.2 GPM	SDS Plus	15
2 2418 0010	0-2500	0-250	2" dia.	6" dia.	1 1/4" dia.	1.8	2.6-13.2 GPM	SDS Max	11
2 2418 0020	Same as 2 2418 0010 above. Includes 2 2406 9700 Pressure Reducing Valve for 2000 PSI.								

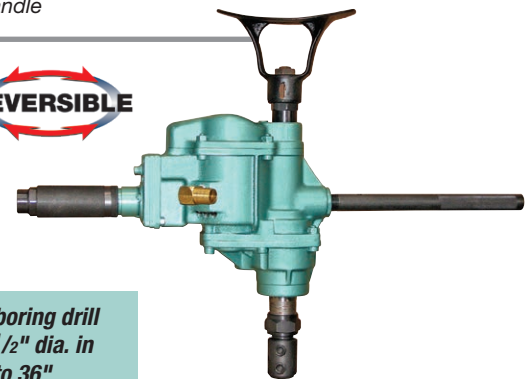
* Hydraulic Hammer Drills operate at hydraulic pressures of 1160 PSI max. Pressure reducing valves are available to reduce pressure from 2000 PSI or 5000 PSI. Available with optional closed center. ** Pressure relief valve is built into the handle

Woodboring Drills

Heavy-duty power for drilling wood in marine timbers, underwater use and railroad repair work

- Thrust bearing support for long life and efficient operation
- Lever throttle and durable spur gearing
- Breast plate and dead handle included
- Includes 1/2" NPT threaded exhaust port
- Recommended hose size: 1/2"
- 1/2" ID air inlet thread
- Use underwater with Air Tool Line Conditioner

REVERSIBLE



Accessories and woodboring drill bits from 1/2" dia. to 1 1/2" dia. in lengths from 12" to 36"

Specifications	Model 2 1903 0010	Model 2 1924 0010	Model 2 1932 0010
Capacity in Wood	1" Diameter	2" Diameter	3" Diameter
Motor Power	2 HP	3 HP	3 HP
Air Consumption: 39 CFM @ 90 PSI			
Chuck Style	1/2" Woodboring	1/2" Woodboring	1/2" Woodboring
Spindle	Stub Taper	#2 Morse Taper	#3 Morse Taper
Free Speed	750 RPM	700 RPM	380 RPM
Weight	14 1/2" lbs.	24 3/4" lbs.	24 3/4" lbs.
Optional Geared Drill Chuck	Part No. DE-99C	Part No. IBC 22 (MT2)	Part No. IBC 21 (MT3)

Caution: User must follow all appropriate safety regulations when choosing a tool for their particular working environment.

Hydraulic Pistol Grip Saw and Pole Saw

Versatile, lightweight saw for utility and maintenance



**Model ACH000
Pistol Grip Saw
(above/right)**

- Up to 6.5 HP, high-torque gear motor
- Open/closed hydraulic system
- Pistol grip with safety trigger lock and insulated handle
- Patented spool system eliminates heat generation, for safer operation
- Ideal for use in utilities, mines, construction and agriculture
- Pole saw models ACS-70 and ACS-80 feature non-conductive fiberglass pole for long reach (overall lengths: ACS-70 - 6.5'; ACS-80 - 7.5')
- Models ACS-70 and ACS-80 approved for live line work



**Model ACS-70
Pole Saw
(above/right)**



Model ACH000-12 - Pistol Grip Saw

Motor Power	Up to 6.5 HP
Handle	Pistol Grip
Motor Specifications	Oil Flow: 3-8 GPM @ 2000 PSI
Overall Length (w/bar)	23"
Bar Length	12" (14" and 16" optional*)
Weight	5.8 lbs.
Hose Connection	3/8" JIC 37°

*For 14" bar, order no. ACH000-14; for 16" bar, order no. ACH000-16

Model ACS-70 - Pole Saw

Motor Power	Up to 6.5 HP
Handle	Pistol Grip
Motor Specifications	Oil Flow: 3-8 GPM @ 2000 PSI
Overall Length (w/bar)*	77"
Bar Length	12" (14" and 16" optional)
Weight	8.8 lbs.
Hose Connection	3/8" JIC 37°

*For 7.5 ft. overall length, order no. ACS-80

New hydraulic chain saw with bar lengths of 11" to 25" also available. Contact CS Unitec for details.

Dry-Cutting Circular Saws – Pneumatic

7-1/2" dia. Heavy-Duty Dry Cutting Air Saw

Cut up to 2-1/2" depth at 90° and 1-1/2" at 45°

Air power ideal for petrochemical, marine, demolition and fabrication industries



1.7 HP
Air Motor

- Heavy-duty air-powered circular saw, ideal for wet and dirty conditions
- Pneumatic power eliminates burn out from stalls
- 7-1/2" max. blade capacity
- D-handle design with inside trigger and safety lock button to prevent accidental starting



Optional Carbide-Tipped 7" (180mm) Dry Cut Saw Blade

P/N 9 2503 0120, 36T, for standard use - dry cuts metal, plastics and wood

7-1/2" dia. Heavy-Duty Dry Cut Air Saw

Order No.	5 1116 0020
Motor Power	1.7 HP (1.3 kW)
Blade Diameter	7-1/2" (190mm)
Max. Depth of Cut	2-1/2" at 90° / 1-1/2" at 45°
Speed (Free)	3,200 RPM
Air Consumption	53 CFM at 90 PSI
Air Connection	1/2" NPT
Vibration	<2.5 m/s ²
Length, Weight	13-1/2", 19 lbs.

* Model 5 1116 0020 also accepts 7-1/4" dia. blades
Standard equipment includes rip fence and blade wrench. Blade not included.

9" dia. Dry Cutting Air Saw for 90° and 45° Cuts

Dry cut up to 3-1/4" depth and 3/8" thick steel plate



ATEX Certified



- Cut steel, nonferrous metal, plastic, grating, composite and corrugated materials
- Cuts at 90° and 45° angles
- Ideal for petrochemical, marine, demolition and fabrication applications

2 HP Air Motor



9" dia. Dry Cut Air Saw for 90° & 45° Cuts

Order No.	5 1115 0020 N
Motor Power	2 HP (1.5 kW)
Blade Diameter	9"
Max. Depth of Cut	3-1/4" at 90° / 2-1/8" at 45°
Speed (Free)	1,700 RPM
Air Consumption	71 CFM at 90 PSI
Air Connection	1/2" NPT
Vibration	<2.5 m/s ²
Weight	19 lbs.

Standard equipment includes an impact-resistant carrying case and Ultra-Thin LBS blade (P/N 722-23060).

Dry Cutting TCT Saw Blades



Part No.	Teeth	Thickness
722-23060*	60	.055"

* Standard with Model 5 1115 0020 Pneumatic Metal Saw.

Tungsten Carbide-Tipped Dry Cutting Blades, 9" dia., .073" thick for Model 5 1115 0020

P/N 721-23048, 48T, for standard use P/N 721-23068, 68T, for thin-wall metal
P/N 721-23060, 60T, for aluminum P/N 721-23084, 84T, for sheet metal

12-5/8" dia. Dry Cutting Air Saw for 90° and 45° Cuts

Cut I-beams, 3/8" thick steel plate, insulation boards, sandwich panels, aluminum, plastics and more



- Heavy-duty air-powered circular saw
- Powerful 2.4 HP motor for demanding applications
- Cuts 3/8" thick steel plate and up to 4-3/4" in other materials
- Suction nozzle and internal chip collector
- D-handle design with inside trigger and safety lock button to prevent accidental starting
- Ideal for steel construction, demolition and more
- Optional guide rail with clamping system (p/n 608275 SET)

12-5/8" Dry Cutting Saw Blade included (P/N 608276).



12-5/8" dia. Dry Cut Air Saw

Order No.	5 1117 0020 N
Motor Power	2.4 HP (1.8 kW)
Blade Diameter	12-5/8"
Max. Depth of Cut	4-3/4"
Speed (Free)	1,200 RPM
Air Consumption	71 CFM at 90 PSI
Air Connection	1/2" NPT
Vibration	<2.5 m/s ²
Weight	24 lbs.

12-5/8" Saw Blades for Model 5 1117 0020
P/N 608276, 84T for standard use P/N 608276SI, 84T for stainless steel

Dry-Cutting Circular Saws – Hydraulic

7-1/2" dia. Heavy-Duty Dry Cutting Hydraulic Saw



ATEX Certified

ATEX Certified - Ideal for use in EX Zones and underwater applications



Carbide-Tipped Blade, 7" dia. (180MM)

P/N 9 2503 0120 36T, for standard use to cut metal, plastics and wood.

Designed for underwater/subsea use, this heavy-duty hydraulic cutoff saw can also be used in standard cutting applications. The 5 1128 0010 uses up to 7-1/2" blades for cutting metal, with a maximum 2-1/2" depth of cut. With miter capability up to 45° this saw can be used for a wide range of cutting applications.

- Ideal for marine and underwater environments
- Cuts up to 2-1/2" depth at 90° and 1-1/2" depth at 45°
- D-handle design with inside trigger and safety lock button to prevent accidental starting

7-1/2" dia. Heavy-Duty Circular Saw

Order No.	5 1128 0010
Motor Power	3.1 HP (2.3 kW)
Blade Diameter	7-1/2" (190mm)
Max. Depth of Cut	2-1/2" at 90° / 1-1/2" at 45°
Speed (Free)	3,200 RPM
Arbor Size	5/8", 3/4", 1.2" (16, 19, 20, 30 mm)
Motor Specifications	5.25 GPM at 2000 PSI
Couplings	1/2" FF (HTMA)
Vibration	<2.5 m/s ²
Weight	22.5 lbs.

* Model 5 1128 0010 saw also accepts 7-1/4" dia. blades
Standard Equipment includes rip fence and blade wrench
(Note: blade not included)

12-5/8" dia. Heavy-Duty Dry Cutting Hydraulic Saw



ATEX Certified

ATEX Certified - Ideal for use in EX Zones and underwater applications



12-5/8" Saw Blades for Model 5 1127 0010

Part No. 608276: 84T, for standard use
Part No. 608276Sl: 84T, for stainless steel
Blade specially coated, increasing cutting life by 2.5X

Designed for underwater/subsea use, this heavy-duty hydraulic cutoff saw can also be used in standard cutting applications. The 5 1127 0010 circular saw uses up to 12-5/8" blades for cutting metal, with a maximum 4-3/4" depth of cut. Ideal for a wide range of cutting applications from cutting I-beams, 3/8" thick steel plate, insulation boards, sandwich panels, aluminum, plastics and more.

- Ideal for marine and underwater environments
- 4-3/4" Max. depth of cut
- D-handle design with inside trigger and safety lock button to prevent accidental starting

12-5/8" dia. Heavy-Duty Circular Saw

Order No.	5 1127 0010
Motor Power	3.1 HP (2.3 kW)
Blade Diameter	12-5/8" (320mm)
Max. Depth of Cut	4-3/4"
Speed (Free)	1,800 RPM
Arbor Size	1" (25.4 mm)
Motor Specifications	5.25 to 6 GPM at 2000 PSI
Couplings	1/2" FF (HTMA)
Vibration	<2.5 m/s ²
Weight	27 lbs.

Standard equipment includes a saw blade (Part No. 608276).

Underwater and Specialty Tools - Hydraulic & Air

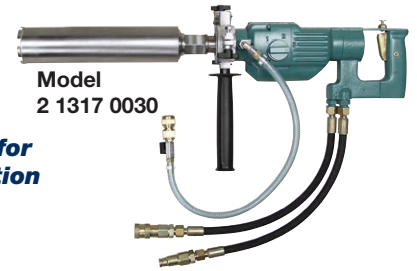
Ideal for Industrial, Subsea, Mining, Utility, Demolition and Construction applications, including Ex Zones and Hazardous Environments

Diamond Core Drills - Hydraulic and Pneumatic

Drill holes up to 12" in concrete, reinforced concrete and asphalt

- Rugged 3-speed gearbox with mechanical slip clutch
- Ideal for heavy-duty drilling in wet and underwater environments

See page 27 for more information



Model 2 1317 0030

Hydraulic Core Drill Model No.	Motor Power	Max. Drilling	Free Speed	Weight	Stand
2 1317 0030*	3.6 HP, 6 GPM @ 2000 PSI	6" dia.	380/900/1800 RPM	16 lbs.	N/A*
2 1327 0010 SA		12" dia.		69 lbs.	Anchor Stand
2 1327 0010 SV		12" dia.		82 lbs.	Anchor Stand & Vacuum Pump

Note: Hand-held core drills are intended up to a max. of 3" dia. for hand-held drilling or up to 6" dia. with a stand.
* For Drill Rig with Anchor Stand, Order No. 2 1317 0030 SA; for Drill Rig with Anchor Stand and Vacuum Pump, Order No. 2 1317 0030 SV

Pneumatic Core Drill Model No.	Motor Power	Max. Drilling	Free Speed	Weight	Stand
2 1333 0010	2.1 HP, 77 CFM @ 90 PSI	3" dia.	400/900/1600 RPM	18 lbs.	N/A
2 1333 0010 SA		6" dia.		49 lbs.	Anchor Stand
2 1333 0010 SV		6" dia.		51 lbs.	Anchor Stand & Vac. Pump
2 1335 0010	3.8 HP, 123 CFM @ 90 PSI	3" dia.	300/700/1350 RPM	21 lbs.	N/A
2 1335 0010 SA		6" dia.		52 lbs.	Anchor Stand
2 1335 0010 SV		6" dia.		54 lbs.	Anchor Stand & Vac. Pump
2 1328 0050 SA	3.8 HP, 123 CFM @ 90 PSI	12" dia.	300/700/1350 RPM	66 lbs.	Anchor Stand
2 1328 0050 SV		12" dia.		72 lbs.	Anchor Stand & Vac. Pump

Note: Hand-held core drills are intended up to a max. of 3" dia. for hand-held drilling or up to 6" dia. with a stand.



Model 2 1328 0050 SA

ATEX Certified
For use in hazardous environments and ATEX and Ex Zones

Impact Wrenches - Pneumatic and Hydraulic

Ideal for tightening and removing bolts and screws up to 2-1/8"

- Applications include industrial, mining, assembly and subsea
- High torque, best power-to-weight ratio



6 1520 0010
1" Hydraulic Impact Wrench
1840 ft-lbs. torque



CuBe
Non-Sparking Impact Sockets also available

6 1515 0010
3/4" Hydraulic Impact Wrench
1220 ft-lbs. torque



Pneumatic Impact Wrench Model No.	Description	Max. Bolt Size	Tightening Torque (Hard)	Weight
6 1316 0070	3/4" Square Drive	1-1/8" (M 30)	995 ft-lbs.	12.3 lbs.
6 1316 0060	1" Square Drive	1-1/8" (M 30)	995 ft-lbs.	13.6 lbs.

Hydraulic Impact Wrench Model No.	Description	Max. Bolt Size	Tightening Torque (Hard)	Weight
6 1515 0010	3/4" Square Drive	1" (M 27)	1220 ft-lbs.	18.1 lbs.
6 1520 0010	1" Square Drive	1-3/8" (M 36)	1840 ft-lbs.	25.0 lbs.



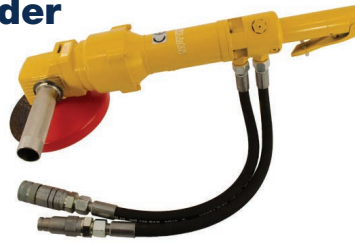
Caution: User must follow all appropriate safety regulations when choosing a tool for their particular working environment.

Underwater and Specialty Tools - Hydraulic & Air

Underwater Hydraulic Angle Grinder

Works with grinding wheels up to 7" dia.

- For use with a variety of wheels, brushes and attachments
- 5,500 RPM at 5.25 GPM



Model 1 1585 0010

Motor Power	1.3 HP
Speed	5500 RPM
Weight	16.72 lbs.
Throttle Type	Lever
Grinding Wheels	Up to 7"

Underwater Hydraulic Horizontal Grinder

Fits grinding discs up to 7-3/4" dia.

- Safety lever control with starting lock for improved user safety
- 7,000 RPM at 5 GPM
- Extensions available up to 19"
- Works with straight grinding wheels, carbide burrs, wire brushes, cones and plugs



Model 1 1580 0060 N

Motor Power	1.3 HP
Speed	7000 RPM
Weight	18.25 lbs.
Throttle Type	Lever
Grinding Wheels	Straight Type

Includes 5/8" x 11 adapter (1 1580 9060) and flange (1 1307 8030) for adapting to different grinding wheel types

Underwater Hydraulic Peanut Die Grinder

Works with cutting wheels up to 4" dia. and carbide burrs

- Safety lever control with starting lock for improved user safety
- 11,500 RPM with flow range from 2.6 to 7.9 GPM



Model 1 5080 0020

Motor Power	1.0 HP
Speed	11,500 RPM
Weight (without hoses)	3.5 lbs.
Throttle Type	Lever
Collet	1/4"
Pressure Relief	2000 PSI (140 bar)

Underwater Hydraulic Vertical Grinder

For grinding discs up to 9" dia.

- Wide safety lever control with starting lock for improved user safety
- Protective shroud rotates 360°
- 3,600 RPM at 12 GPM
- Ergonomic primary handle and removable second handle for added stability



Model 1 2060 0010

Motor Power	4.75 HP
Speed	3,600 RPM
Weight	12.75 lbs.
Throttle Type	Lever
Grinding Wheels	Up to 9"
Connections	3/4" - 16 UNF

AirPac Dryer/Cleaner

Model CSAP-2

- Removes moisture and dirt from air lines; a float valve automatically ejects water and dirt
- Includes automatic oiler; protects tools from freezing in cold environments
- Eliminates air motor downtime caused by water and dirt
- Connections for two tools, max. air flow 185 CFM



Air Tool Lubricant

ProLube-ATL - P/N CS 7043-001 (gallon)

Air Tool Lubricant with Anti-Freeze

ProLube-ATL/AF - P/N CS 7049-001 (gallon)

Air Tool Line Conditioner/Cleaner

For use in underwater air tools – displaces moisture and inhibits rust and corrosion of air motors - P/N MS 9105 (quart)

Hydraulic Power Unit

Model P95

- Ideal for use with our hydraulic power tools.
- Delivers 5 GPM or 8 GPM at 2000 PSI
- Easy to move with lift and latch handle
- Weighs 330 lbs.
- 18 HP gas engine



The Hydraulic Power Unit is available with gas, electric or diesel engines. Contact us for more information.

Caution: User must follow all appropriate safety regulations when choosing a tool for their particular working environment.

Also Available from CS Unitec

CS Unitec, Inc. specializes in industrial power tools and safety tools for construction and industry.

Innovation and high quality are synonymous with CS Unitec's power tools. In 1991, the company invented the first pneumatic portable band saw. CS Unitec has added to its list of industry firsts with the widest range of portable magnetic drills and hand-held concrete core drills. The line also includes surface preparation tools for metal, concrete and masonry, air, electric and hydraulic portable band saws, reciprocating saws, hacksaws, nut runners, rotary hammer drills, rolling motors, non-sparking safety tools, portable mixers and dust extraction vacuum systems.

For tool specifications and ATEX and Ex Zone information, visit www.csunitec.com.

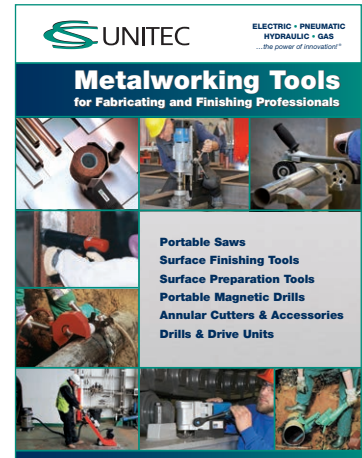
Call 1-800-700-5919 or 203-853-9522 to request any of the catalogs shown below.



Contractor Tools:
Surface Preparation Tools, Concrete Grinders, Dust Collection Systems, Diamond Core Drills, Air Concrete Saws and more



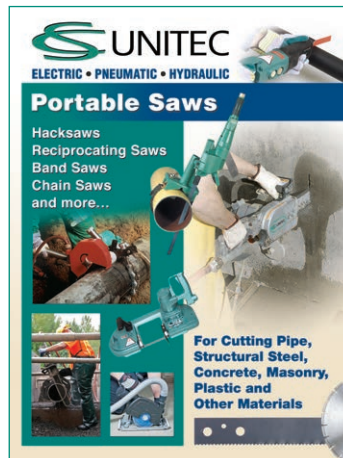
View demo videos at www.csunitec.com



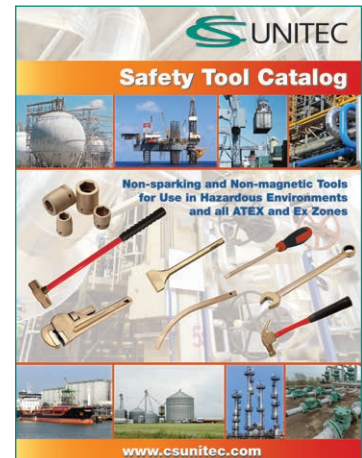
Metalworking Tools:
Surface Preparation Tools, Dust Collection Systems, Dry Cutting Portable Saws, Portable Magnetic Drills, Bridge Reamers and more



Portable Mixers:
Portable Mixing Machines for Mortar, Concrete, Plaster, Flooring Adhesives, Grout, Coatings, Paint, Self-leveling Compounds and more



Portable Saws:
Hacksaws, Reciprocating Saws, Band Saws, Chain Saws, Cut-off Saws and more



Non-Sparking Hand Tools:
Non-Sparking Hand Tools Power Tools for use in Ex Zones, ATEX Zones and Hazardous Environments



CS UNITEC, Inc. 22 Harbor Avenue, Norwalk, CT 06850
 4330 Center St., Deer Park, TX 77536
 Phone 800-700-5919 • 203-853-9522 • Fax 203-853-9921
 Email info@csunitec.com • www.csunitec.com

View product demonstrations at www.csunitec.com.

ALL SPECIFICATIONS ARE SUBJECT TO CHANGE

© Copyright 2020, CS Unitec, Inc., 3-2021